

MAYBOLE COMMUNITY CAMPUS
PRESENTATION 16.03.2021



Contents

1. General Arrangements

- Lower Ground Floor
- Upper Ground Floor
- First Floor
- Second Floor

2. Digital Literacy

- Cluster Layout
- Digital Literacy
- Digital Literacy 1
- Digital Literacy 2

3. CDT

- Cluster Layout
- Digital Literacy



1. General Arrangements



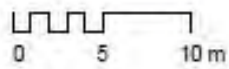
Lower Ground Floor



Key

Business & Computing	Facilities Management (D)	General Toilet	School Management (H)
Circulation (D)	Facilities Management (nd)	Home economics	Science
Circulation (nd)	Flexible Learning (D)	Learning place	Shared
Cloaks (D)	Flexible Learning (nd)	Medical	Social
Community	Flexible Learning (H)	Multi-purpose	Sports
Craft and Design	General Purpose	Plant	Staff / Admin
Dry Room	General Teaching (D)	Pupil Support	Storage
Expressive Arts	General Teaching (ND)	School Management (D)	Store (D)
		School Management (ND)	Swimming pool

1 (PP) - Proposed Lower Ground Floor Plan



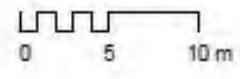
Upper Ground Floor



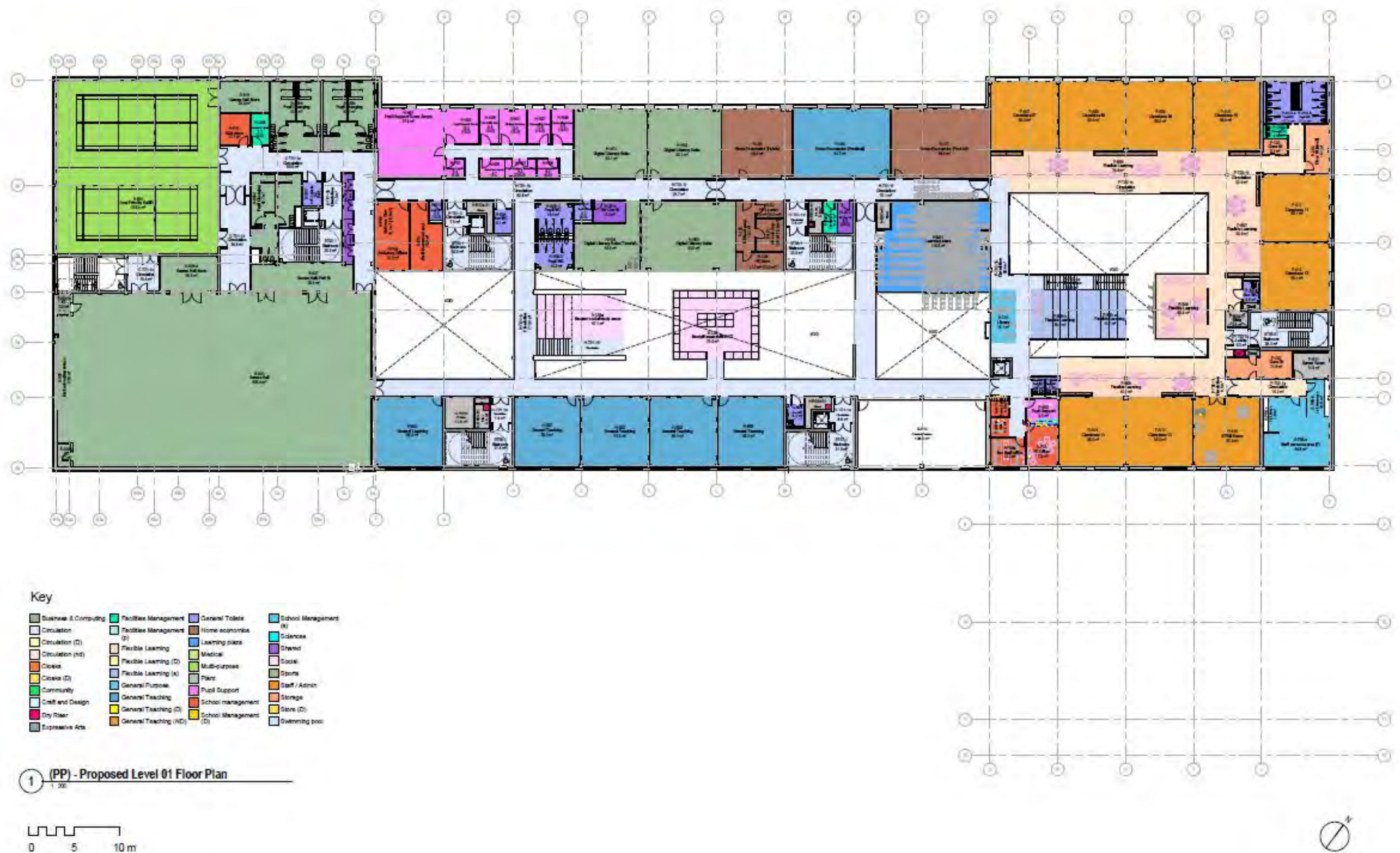
Key

Business & Computing	Facilities Management	General Toilets	School Management (H)
Circulation	Facilities Management (D)	Home economics	Schoolroom
Circulation (D)	Flexible Learning	Learning place	Shared
Circulation (nd)	Flexible Learning (D)	Medical	Social
Cloak	Flexible Learning (A)	Multi-purpose	Sports
Cloaks (D)	General Purpose	Plant	Staff / Admin
Community	General Teaching	Pupil Support	Storage
Craft and Design	General Teaching (D)	School management	Store (D)
Dry Room	General Teaching (ND)	School Management (D)	Swimming pool
Expressive Arts			

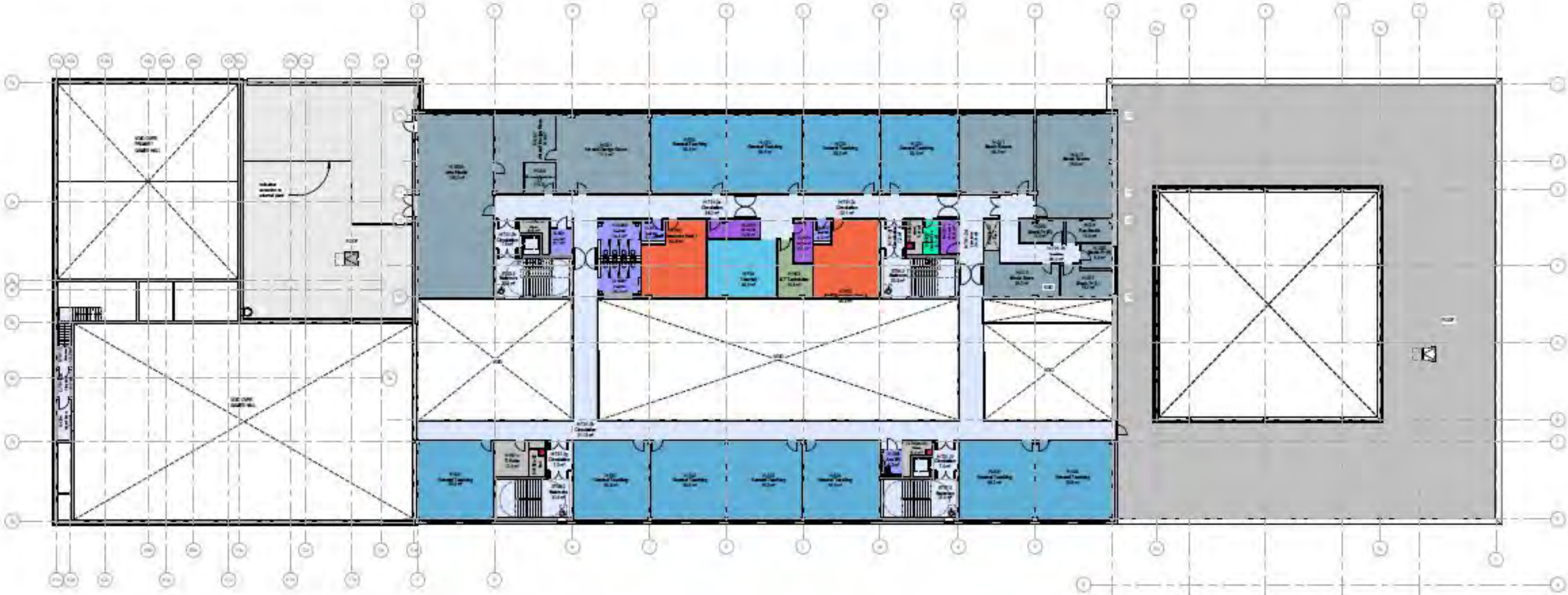
1 (PP) - Proposed Upper Ground Floor Plan
1:200



First Floor



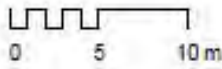
Second Floor



Key

Business & Computing	Facilities Management	General Toilet	School Management (H)
Circulation	Facilities Management (S)	Home economics	School Management (S)
Circulation (D)	Flexible Learning	Learning place	Shared
Circulation (nd)	Flexible Learning (D)	Medical	Social
Cloaks	Flexible Learning (D)	Multi-purpose	Sports
Cloaks (D)	Flexible Learning (S)	Plant	Staff / Admin
Community	General Purpose	Pupil Support	Storage
Craft and Design	General Teaching	School management	Store (D)
Dry Room	General Teaching (D)	School Management (D)	Swimming pool
Expressive Arts	General Teaching (ND)		

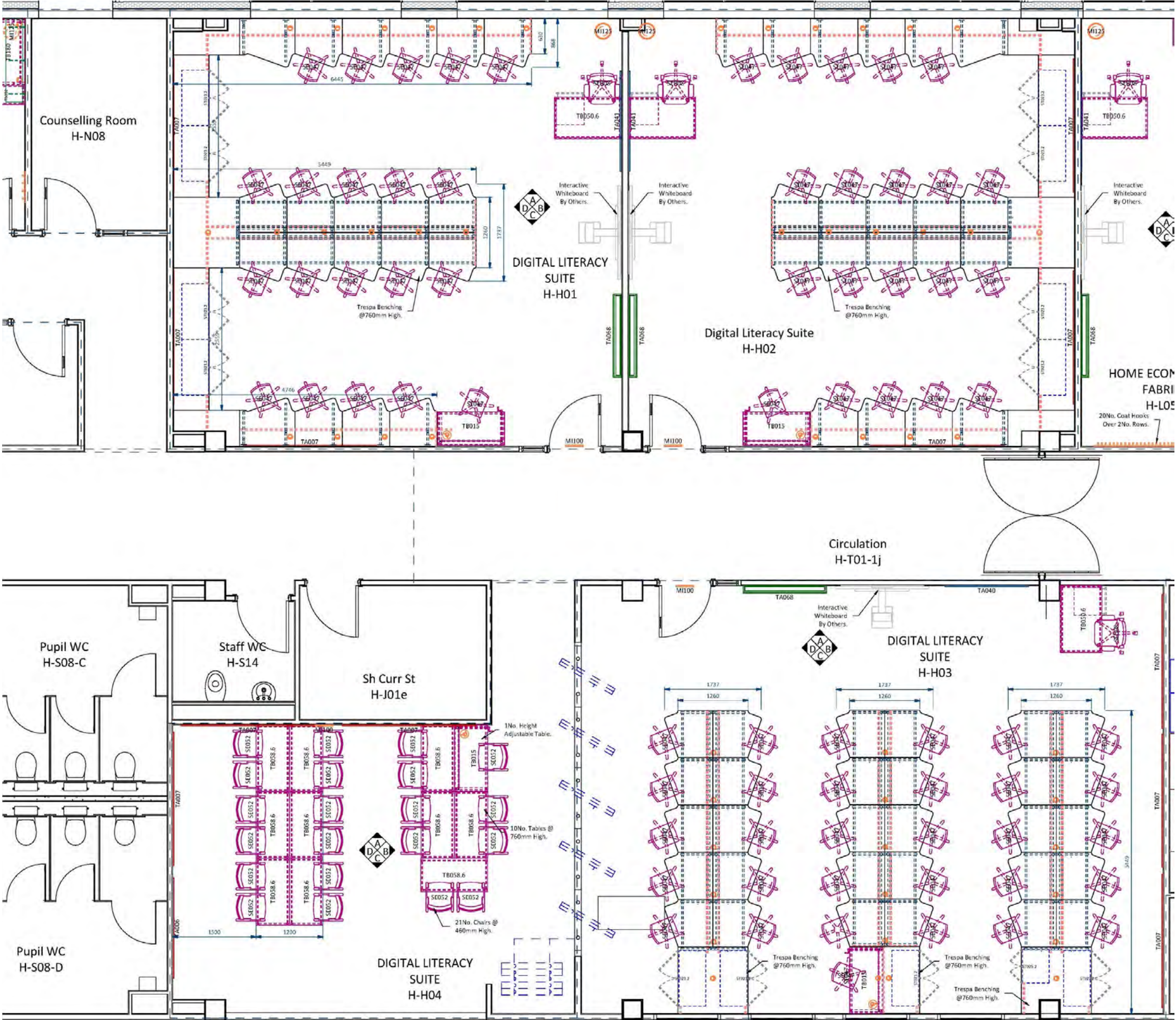
1 (PP) - Proposed Level 02 Floor Plan
1:200



7. DIGITAL LITERACY

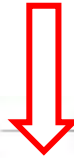


Digital Literacy Cluster

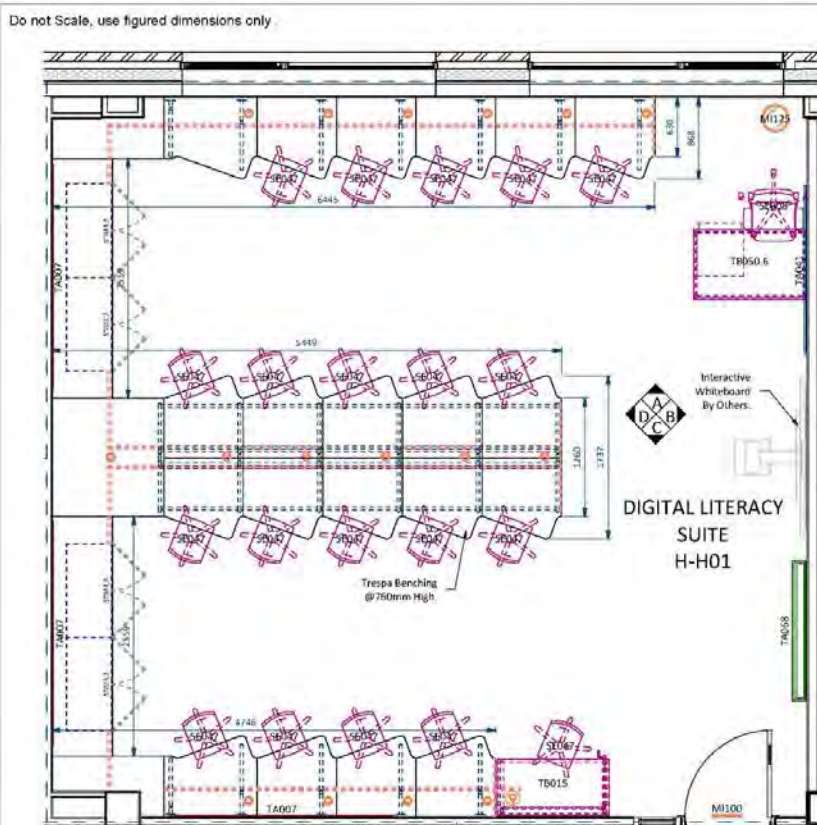


Digital Literacy

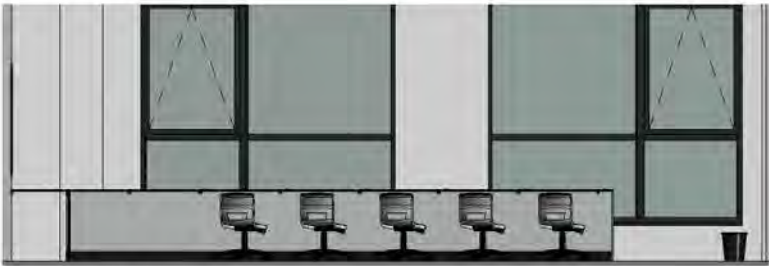
Your Space



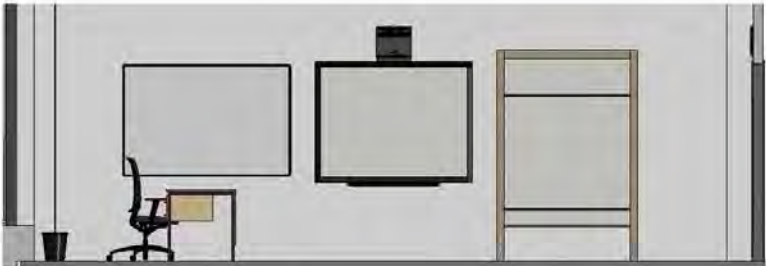
Digital Literacy



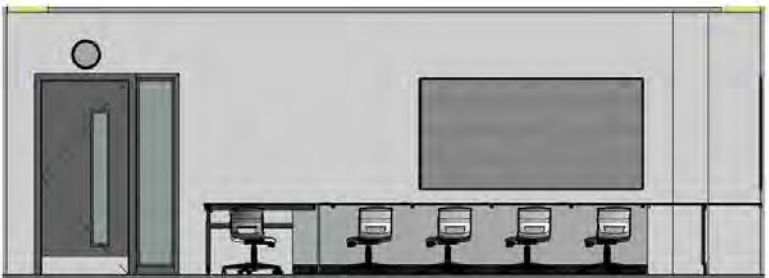
H-H01 Digital Literacy Suite
1 : 50



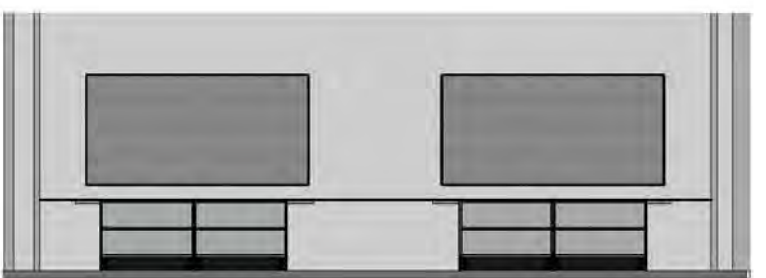
H-H01 Elevation A
1 : 50



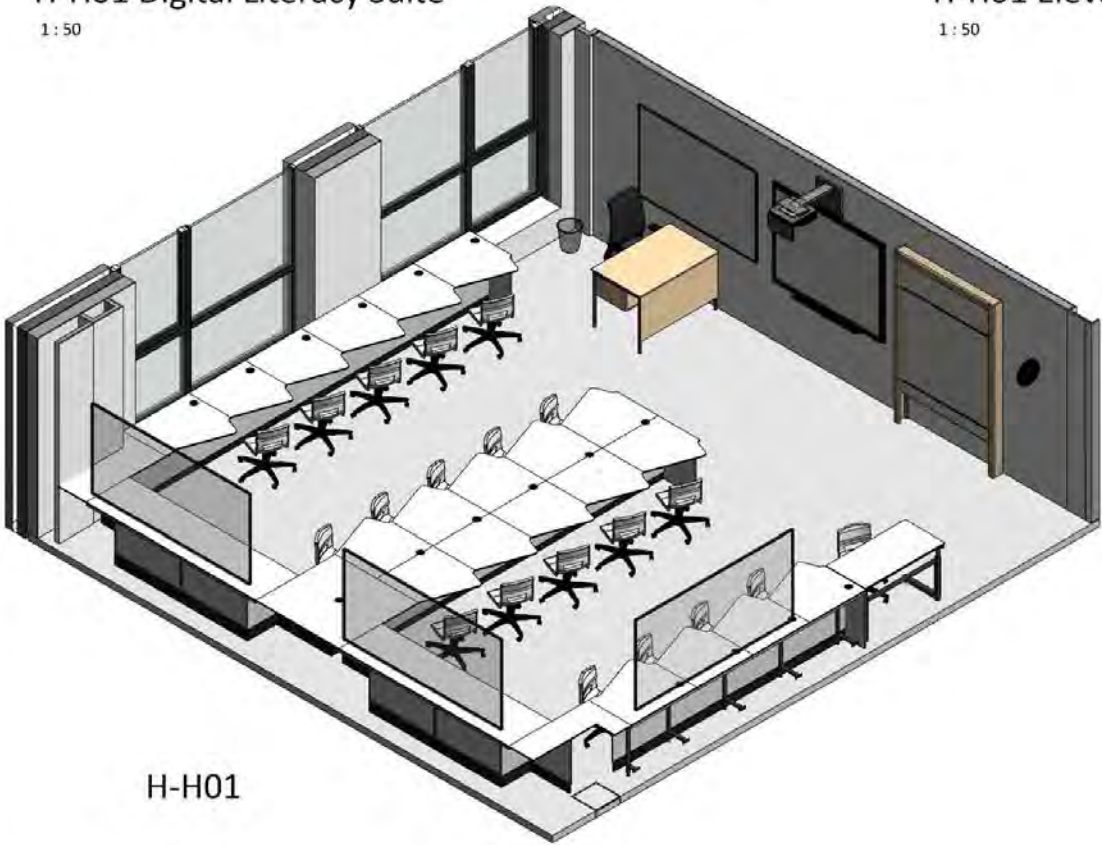
H-H01 Elevation B
1 : 50



H-H01 Elevation C
1 : 50



H-H01 Elevation D
1 : 50



H-H01

ID	Product Code	Type	PDS	Description	UOM	Total Im	Qty
WT018	LH 750 - 1000	Fixed	WTOP07	16mm SGL 650mm Deep Worktop	lm	4.8	4
MW002	LC2	Fixed	LEG002	Metalwork - Cantilevered Metal Leg for 650mm Deep Worktop	ea	0.0	4
MW002	LC2	Fixed	LEG002	Metalwork - Cantilevered Metal Leg for 800mm Deep Worktop	ea	0.0	20
MW011	LSL 3	Fixed	T8C	Metalwork - Connecting Rails for Perimeter/Island Support Legs	lm	18.0	22
MW004	LS1	Fixed	LEG004	Metalwork - Peninsular Support Leg @ 1200(d)	ea	0.0	12
SR078	CO 800 PLASTIC	Fixed	P8007	Miscellaneous - Surface Mounted Cable Management Port	ea	0.0	32
M1100	CLO1	Fixed	CBW001	Miscellaneous - Wall Mounted Clock (Battery Operated)	ea	0.0	2
-	CP 900 1000	Fixed	PAN001	Panel - MFC End Panel	lm	4.8	6
-	CP 700 1000	Fixed	PAN001	Panel - MFC Removable Panel	lm	53.0	18
ST023.2	BU 1000 D-	Fixed	STU002	Storage - Double Cupboard @ 1000(w) x 500(d) x 600(h)	ea	0.0	8
TA007	NB F A 1200 2400	Fixed	NBO001	Teacher Aids - (AF) Felt Pinboard @ 2400(w) x 1200(h)	ea	0.0	6
TA041	WB G A 1800 1200	Fixed	WBO002	Teacher Aids - (AF) High Gloss Whiteboard @ 1800(w) x 1200(h) w/ Pen Shelf	ea	0.0	2
TA068	RB 2250 1500 4	Fixed	WBO004	Teacher Aids - Rollerboard w/ 4 Plain White Panels @ 1500(w) x 2250(h)	ea	0.0	2
WT018	LH 750 - 1000	Fixed	WTOP07	Worktop - 16mm SGL 650mm Deep Worktop	lm	10.2	4
WT0016	LH 1200 1000	Fixed	WTOP07	Worktop - 16mm SGL 900mm Deep Sawtooth Worktop	lm	30.6	36
WT016	LH 1200 1000	Fixed	WTOP07	Worktop - 16mm SGL (Island/Peninsula) 1200mm Deep Worktop	lm	2.5	2
WT0016	LH 1200 1000	Fixed	WTOP16	Worktop - 16mm Trespa 900mm Deep Sawtooth Worktop	lm	4.0	4
M1125	WB8N001	Loose	PWB001	Miscellaneous - 14ltr Waste Bin	ea	0.0	3
SE008	CHA001	Loose	SEA001	Seating - Executive High Mesh Back VDU Chair w/ Arms	ea	0.0	2
SE047	CHA042	Loose	SEA032	Seating - Postura Task Chair w/ Castors	ea	0.0	40
T8015	HAF M 1200	Loose	HAD02	Tables - Height Adjustable Table Frame @ 1200(w) x 600(d) w/ Trespa Top	ea	0.0	2
T8050.6	DES007	Loose	LST002	Tables - Teachers Classroom Table w/ PU Edge & 2 Drawer Suspended Pedestal @ 1200(w) x 750(d) x 760(h)	ea	0.0	2

Project:	Maybole Campus	Project No:	32044	Status:	Tender
Location:	First Floor	Drawn By:	BB	Date:	06/11/20
Room Name:	H-H01 Digital Literacy Suite	Designed By:	Deanestor Scotland Ltd		
Room No:	F016	Scale:	1 : 50 @ A2		
Drawing No:	MAY-DEA-ZZ-02-DR-X-70-016	Rev:	B		

Rev. A: Revised to include Project Information Meeting Notes dated 22/10/2022 and final Rev'd Model
Rev. B: Final Rev'd Model

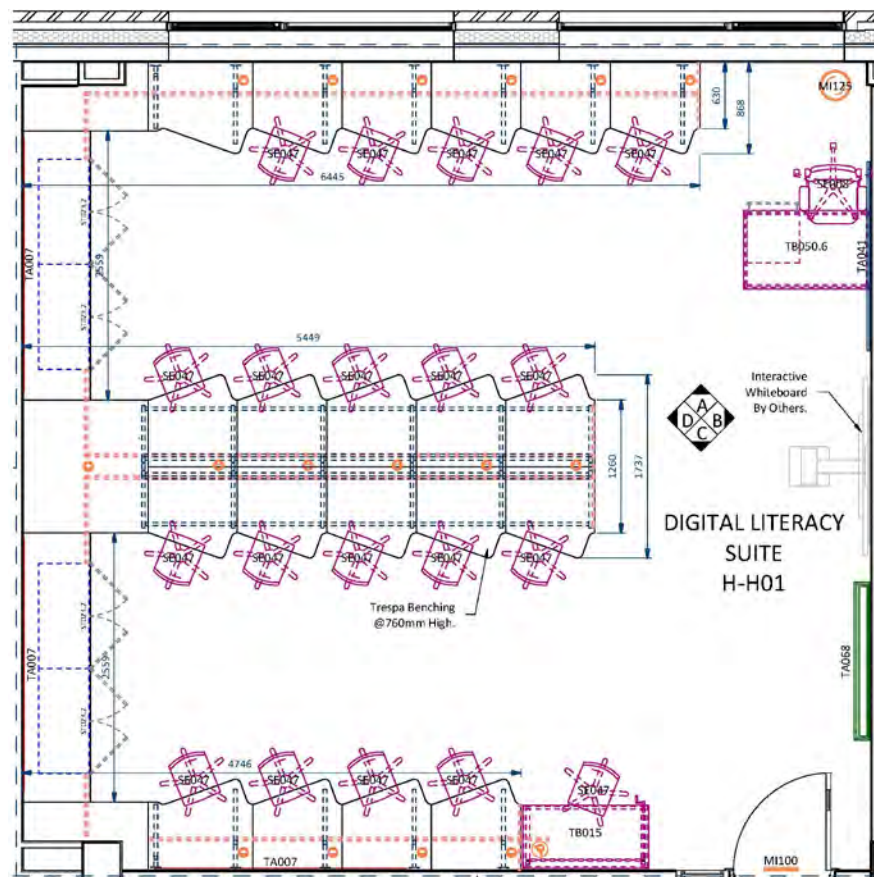
Rev. C: Final Rev'd Model
Rev. D: Final Rev'd Model

Review Outcome:	By	Chk'd	Date
A. Approved, no comments.			
B. Approved subject to comments. (to be incorporated)			
C. Not approved. (issue if acceptable with amendments, etc. to be issued)			
Signed:			
Date:			

© Copyright of Deanestor Scotland Ltd.
Deanestor Scotland Ltd shall have no responsibility for any use of this document other than which it was prepared.
Any drawing errors or divergencies should be brought to the attention of Deanestor Scotland Ltd.
Drawings to be read & fully understood before work commences.
IF IN DOUBT ASK. DO NOT SCALE. Use figured dimensions only.
To be checked on site by contractor prior to construction.

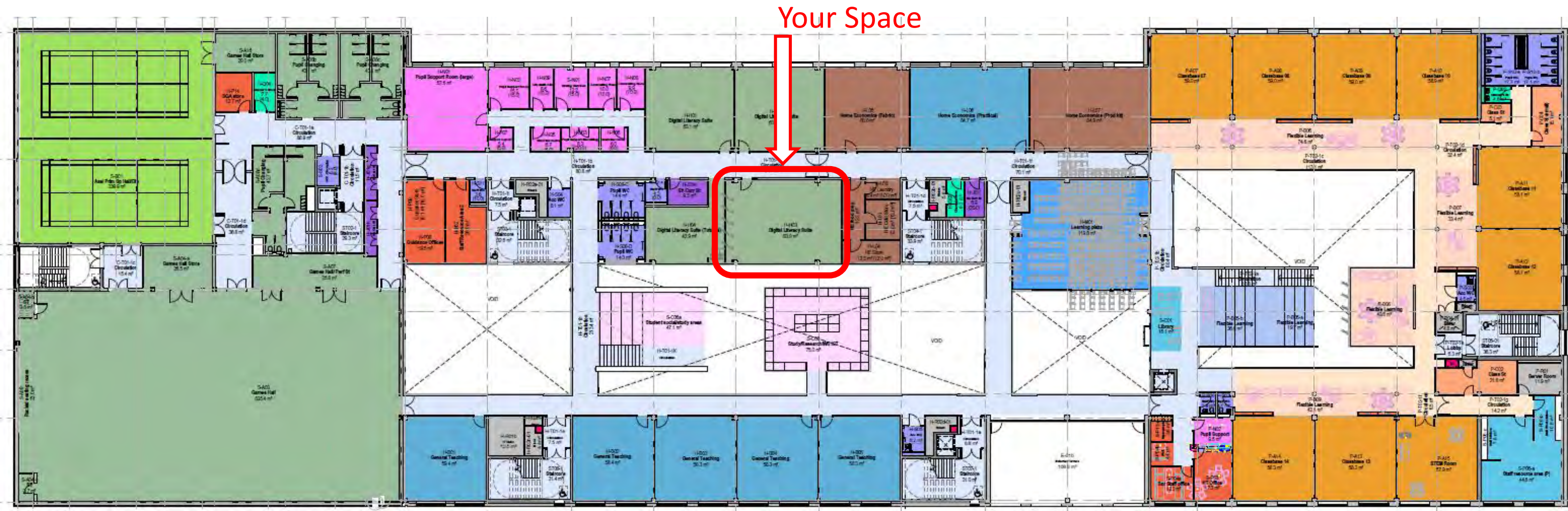
Digital Literacy

- The layout features a fixed benching arrangement around the perimeter with peninsula centralised.
- The layout is space efficient and ergonomically set out.
- Trespa worksurfaces specified throughout for modern contemporary design.
- The design caters for extensive data and power requirements, concealed within the bench arrangement. Cable management is integral to the design.
- Height adjustable mobile pupil seating for ease of flexible movement and ergonomics.
- Height Adjustable DDA compliant table included within design.
- Extended Warranties: 20 years Seating Shells, 1 year on other parts.

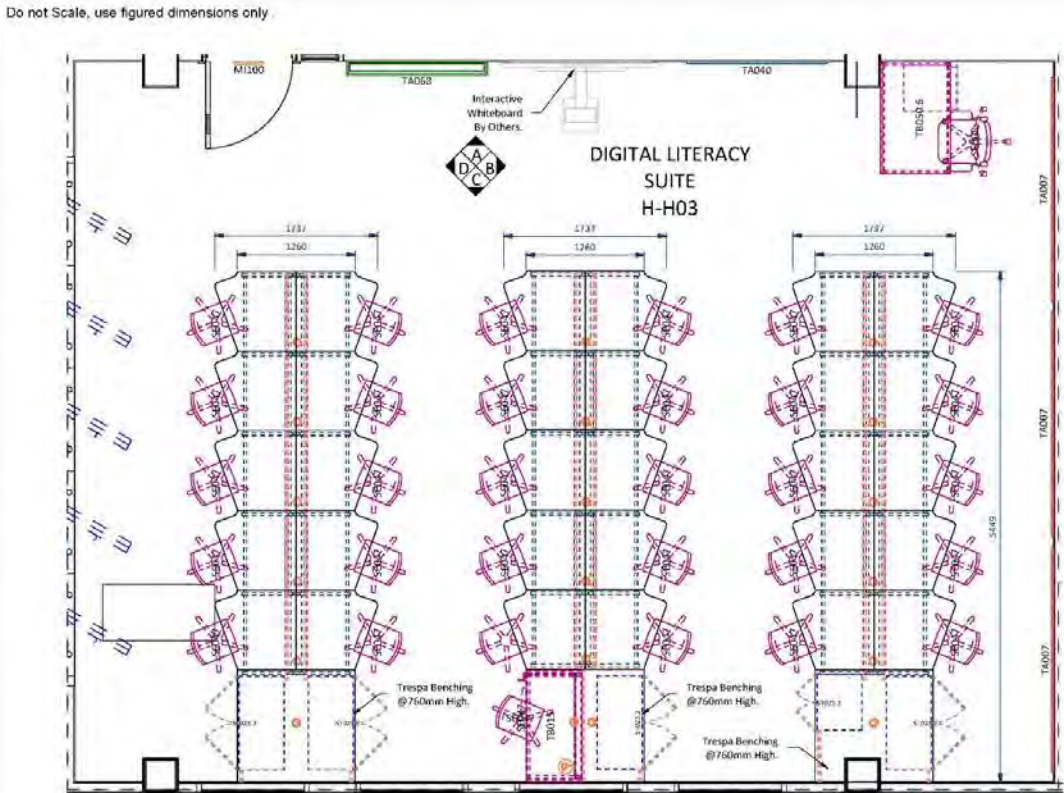


Seating for: 20 Pupils

Digital Literacy 1

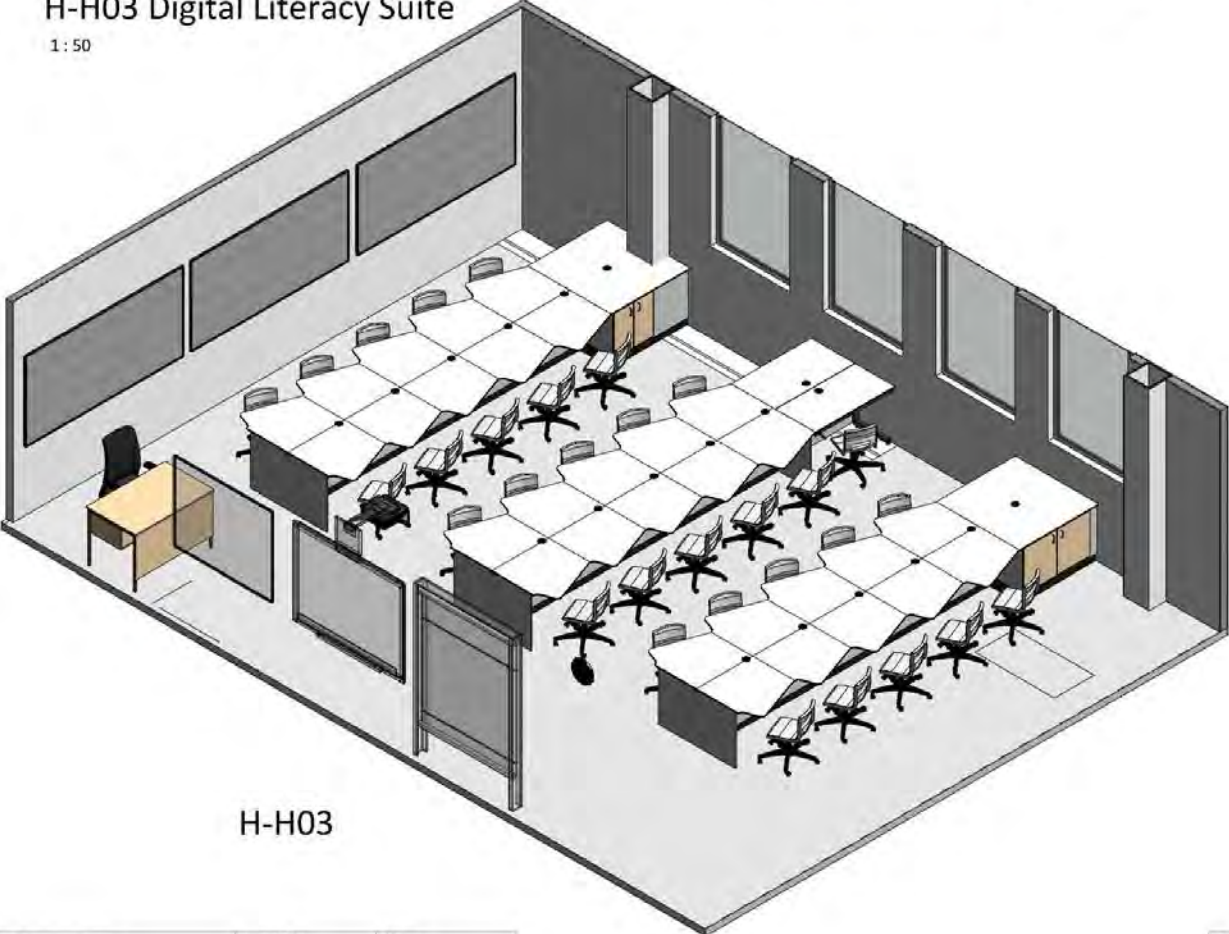


Digital Literacy 1



H-H03 Digital Literacy Suite

1 : 50



H-H03



H-H03 Elevation A

1 : 50



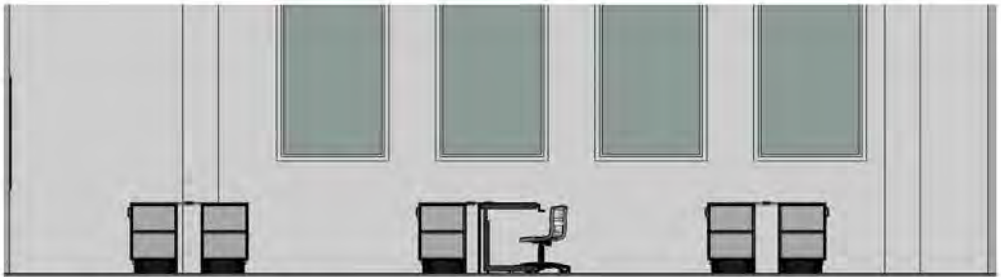
H-H03 Elevation B

1 : 50



H-H03 Elevation D

1 : 50



H-H03 Elevation C

1 : 50

ID	Product Code	Type	PDS	Description	UOM	Total lm	Qty
MW011	LSL 3---	Fixed	TBC	Metalwork - Connecting Rails for Perimeter/Island Support Legs	lm	24.4	30
MW004	LS1	Fixed	LEG004	Metalwork - Peninsular Support Leg @ 1200(d)	ea	0.0	18
SR078	CO 80D PLASTIC	Fixed	PB007	Miscellaneous - Surface Mounted Cable Management Port	ea	0.0	19
MI100	CLO1	Fixed	CBW001	Miscellaneous - Wall Mounted Clock (Battery Operated)	ea	0.0	1
	CP 900 1000	Fixed	PAN001	Panel - MFC End Panel	lm	5.8	5
	CP 700 1000	Fixed	PAN001	Panel - MFC Removable Panel	lm	26.8	11
ST025.2	BU 600 D---	Fixed	STU002	Storage - Double Cupboard @ 600(w) x 500(d) x 600(h)	ea	0.0	1
ST023.2	BU 1000 D---	Fixed	STU002	Storage - Double Cupboard @ 1000(w) x 500(d) x 600(h)	ea	0.0	4
TA007	NB F A 1200 2400	Fixed	NB0001	Teacher Aids - (AF) Felt Pinboard @ 2400(w) x 1200(h)	ea	0.0	3
TA040	WB G A 1500 1200	Fixed	WBO002	Teacher Aids - (AF) High Gloss Whiteboard @ 1500(w) x 1200(h) w/ Pen Shelf	ea	0.0	1
TA068	RB 2250 1500 4	Fixed	WBO004	Teacher Aids - Rollerboard w/ 4 Plain White Panels @ 1500(w) x 2250(h)	ea	0.0	1
WT0016	LH 1200 1000	Fixed	WTOP07	Worktop - 16mm SGL 900mm Deep Sawtooth Worktop	lm	25.5	30
WT016	LH 1200 - 1000	Fixed	WTOP07	Worktop - 16mm SGL (Island/Peninsula) 1200mm Deep Worktop	lm	3.2	3
MI125	WBIN001	Loose	PWB001	Miscellaneous - 14ltr Waste Bin	ea	0.0	1
SE008	CHA001	Loose	SEA001	Seating - Executive High Mesh Back VDU Chair w/ Arms	ea	0.0	1
SE047	CHA042	Loose	SEA032	Seating - Postura Task Chair w/ Castors	ea	0.0	31
TB015	HAF M 1200	Loose	HADJ02	Tables - Height Adjustable Table Frame @ 1200(w) x 600(d) w/ Trespa Top	ea	0.0	1
TB050.6	DES007	Loose	LST002	Tables - Teachers Classroom Table w/ PU Edge & 2 Drawer Suspended Pedestal @ 1200(w) x 750(d) x 760(h)	ea	0.0	1

Project:	Maybole Campus	Project No:	32044	Status:	Tender
Location:	First Floor	Drawn By:	BB	Date:	06/11/20
Room Name:	HH03 Digital Literacy Suite	Designed By:	Deanestor Scotland Ltd		
Room No:	F018	Scale:	1 : 50 @ A2		
Drawing No:	MAY-DEA-ZZ-02-DR-X-70-018	Rev:	A		

Review Outcomes:	
A. <input type="checkbox"/> Approved, no comments.	
B. <input type="checkbox"/> Approved subject to comments. (to be submitted)	
C. <input type="checkbox"/> Not approved. (issue if appropriate with reasons, etc. to be submitted)	
Signed:	
Date:	

© Copyright of Deanestor Scotland Ltd. Deanestor Scotland Ltd shall have no responsibility for any use of this document other than which it was prepared. Any drawing errors or divergencies should be brought to the attention of Deanestor Scotland Ltd. Drawings to be read & fully understood before work commences. IF IN DOUBT ASK. DO NOT SCALE. Use figured dimensions only. To be checked on site by contractor prior to construction.

Digital Literacy 2

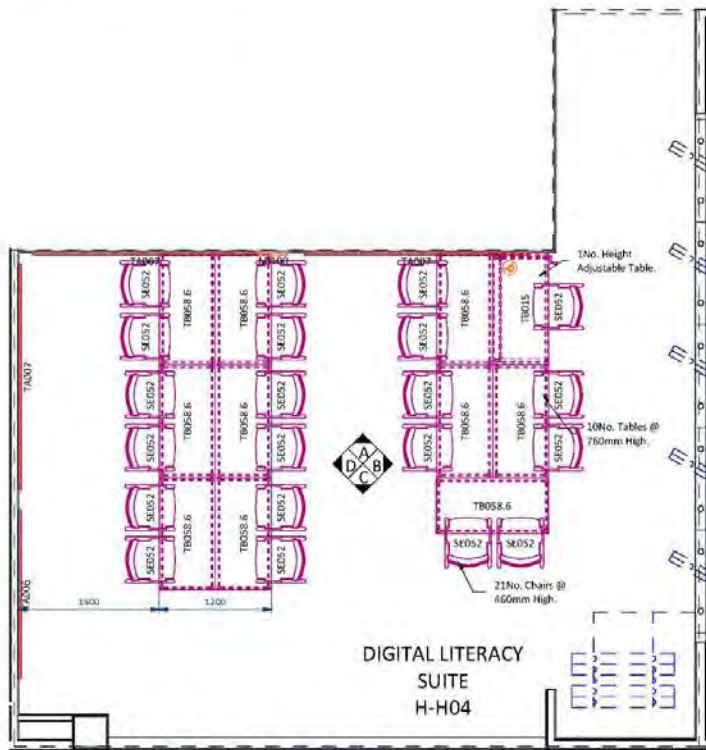
Your Space



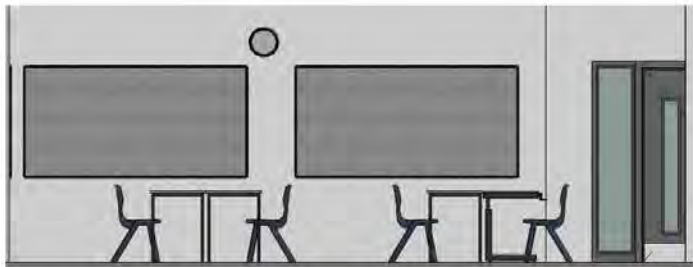
Digital Literacy 2

Do not Scale, use figured dimensions only

09/03/2021 09:37:43



H-H04 Digital Literacy Suite
1 : 50



H-H04 Elevation A
1 : 50



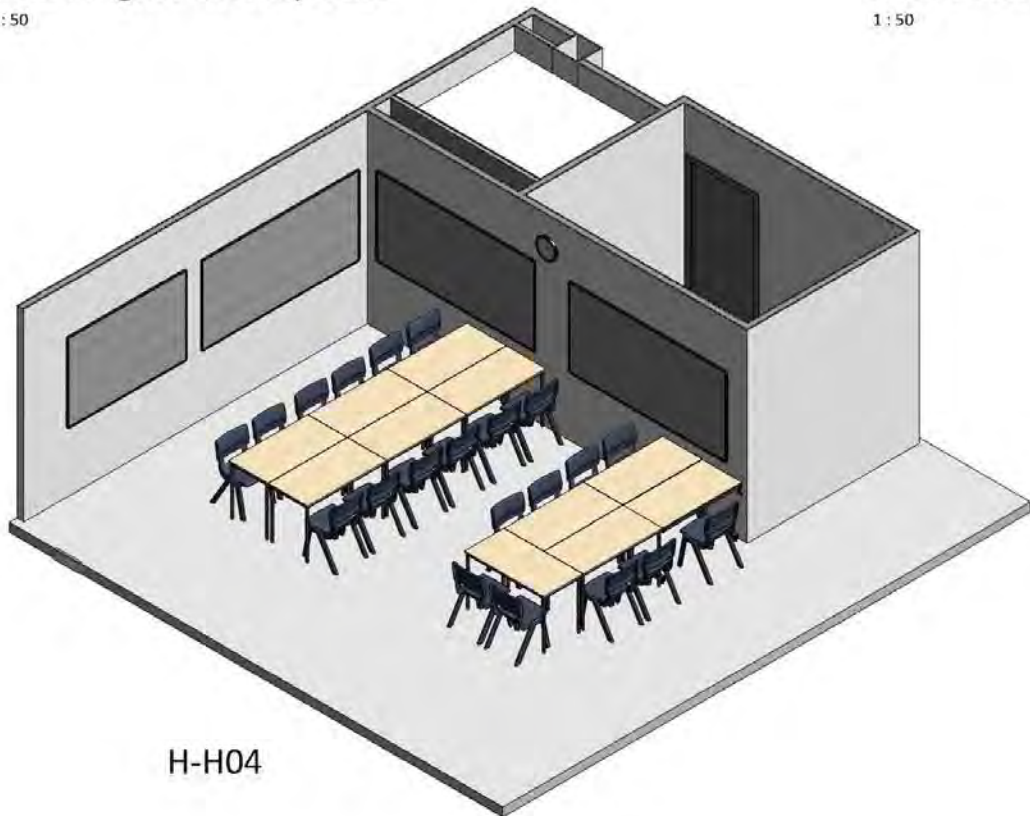
H-H04 Elevation B
1 : 50



H-H04 Elevation C
1 : 50



H-H04 Elevation D
1 : 50



H-H04

ID	Product Code	Type	PDS	Description	UOM	Total Im	Qty
M1100	CLO1	Fixed	CBW001	Miscellaneous - Wall Mounted Clock (Battery Operated)	ea	0.0	1
TA006	NB F A 1200 1800	Fixed	NB0001	Teacher Aids - (AF) Felt Pinboard @ 1800(w) x 1200(h)	ea	0.0	1
TA007	NB F A 1200 2400	Fixed	NB0001	Teacher Aids - (AF) Felt Pinboard @ 2400(w) x 1200(h)	ea	0.0	3
SE052	CHA047	Loose	SEA035	Seating - Postura+ Chair @ 460(h) (Size 6)	ea	0.0	21
TB015	HAF M 1200	Loose	HADJ02	Tables - Height Adjustable Table Frame @ 1200(w) x 600(d) w/ PU Edged Top	ea	0.0	1
TB058.6	TA8017	Loose	LT5004	Tables - Pupils Classroom Table w/ PU Edge @ 1200(w) x 600(d) x 760(h)	ea	0.0	10

Project: Maybole Campus	Project No: 32044	Status: Tender
Location: First Floor	Drawn By: BB	Date: 06/11/20
Room Name: HH04 Digital Literacy Suite	Designed By: Deaneor Scotland Ltd	
Room No: F019	Scale: 1 : 50 @ A2	
Drawing No: MAY-DEA-ZZ-02-DR-X-70-019	Rev: C	

Rev: C
Description: Digital Literacy Suite
By: BB
Chk'd: BB
Date: 06/11/20

Rev: C
Description: Digital Literacy Suite
By: BB
Chk'd: BB
Date: 06/11/20

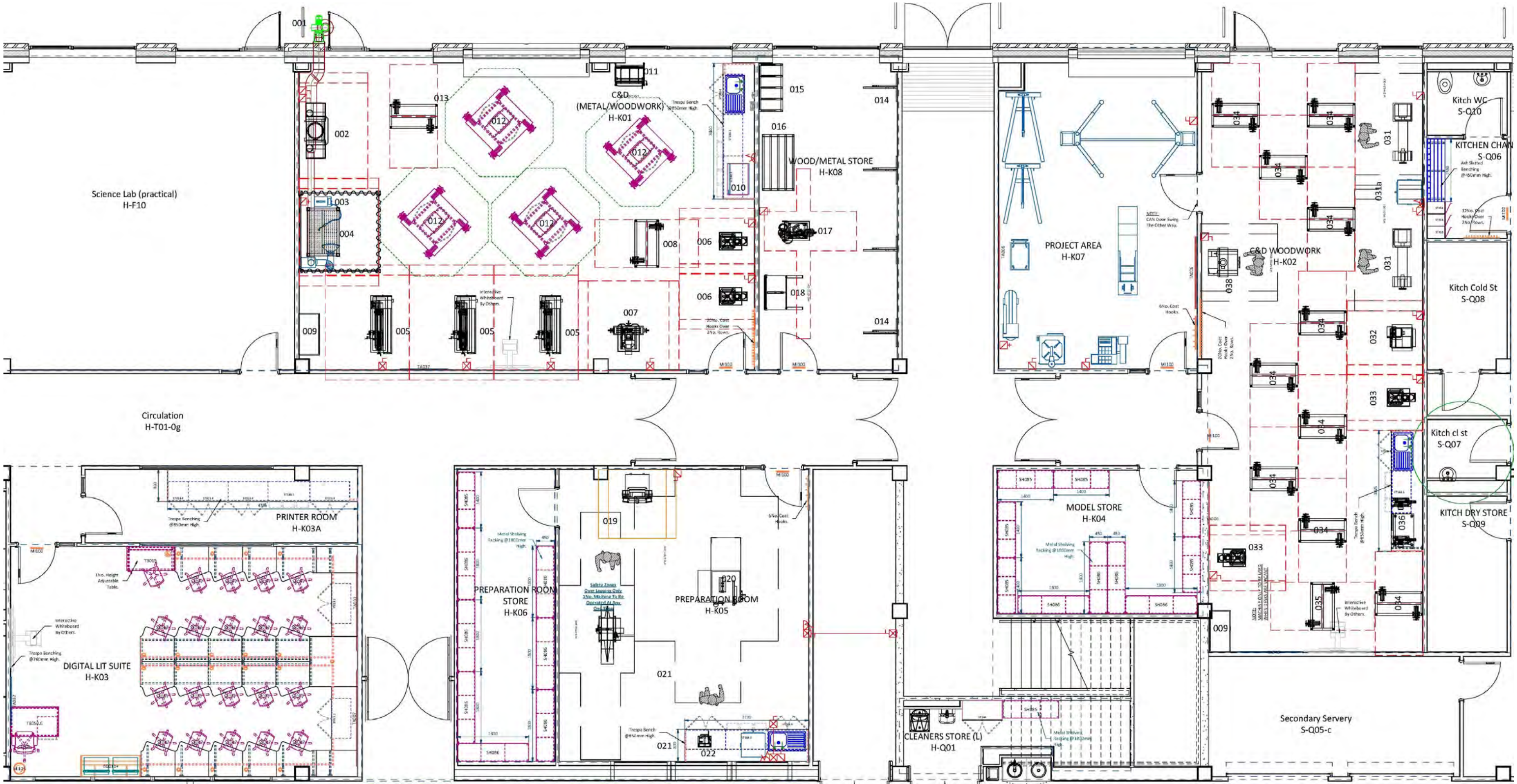
Review Outcome:	
A. Approved, no comments.	
B. Approved subject to comments.	
C. Not approved. (quote if appropriate with reasons).	
Signed:	
Date:	

© Copyright of Deaneor Scotland Ltd.
Deaneor Scotland Ltd shall have no responsibility for any use of this document other than which it was prepared.
Any drawing errors or divergencies should be brought to the attention of Deaneor Scotland Ltd.
Drawings to be read & fully understood before work commences.
IF IN DOUBT ASK. DO NOT SCALE. Use figured dimensions only.
To be checked on site by contractor prior to construction.

8. CDT

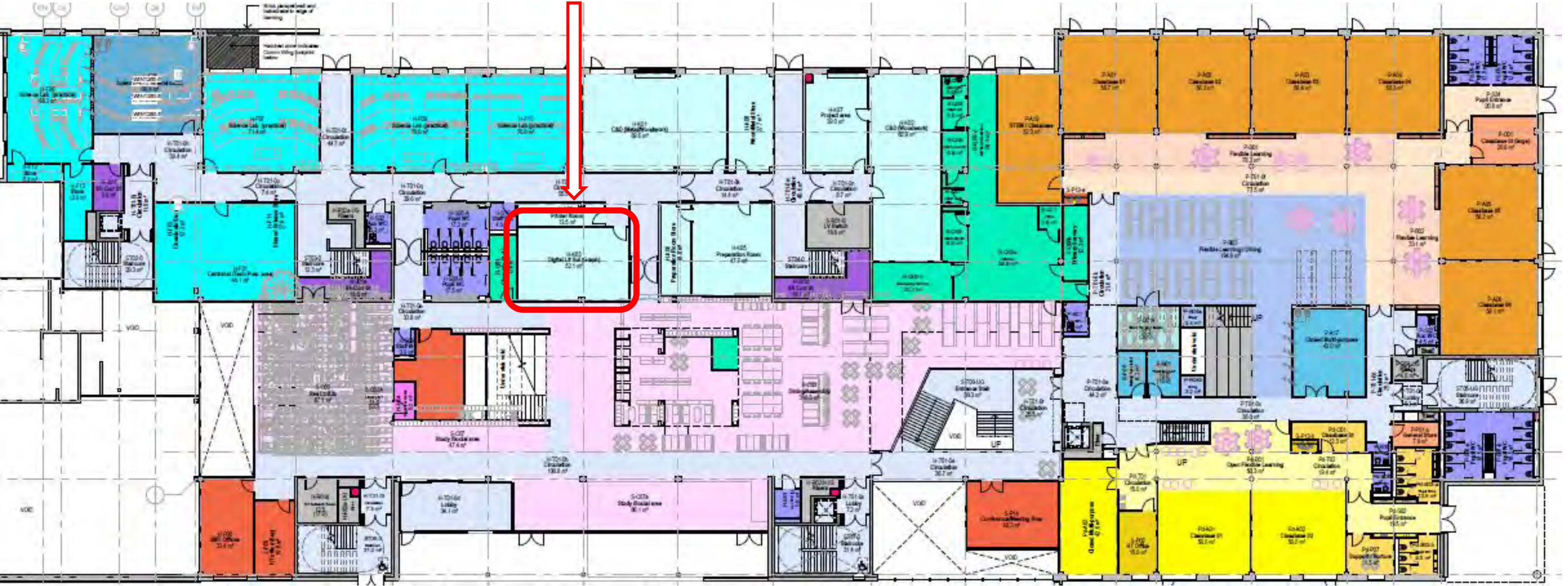


CDT Cluster



Digital Literacy

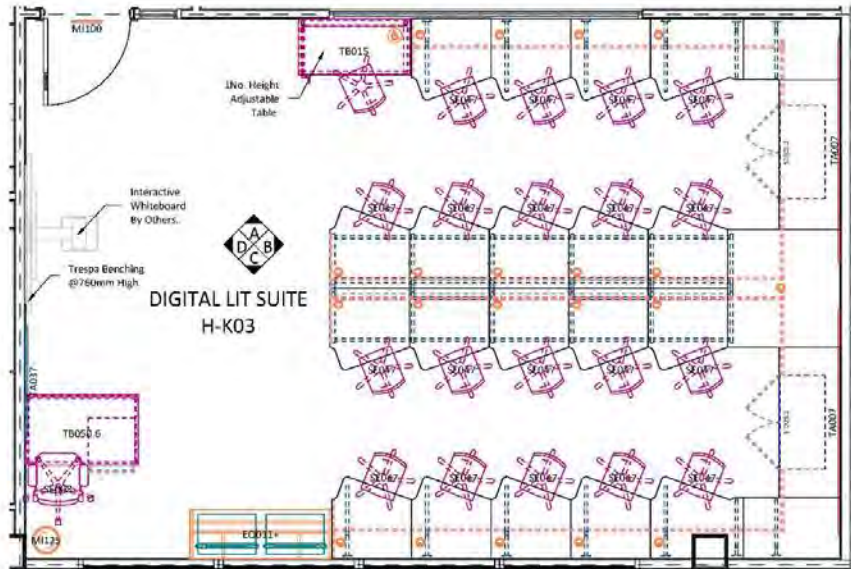
Your Space



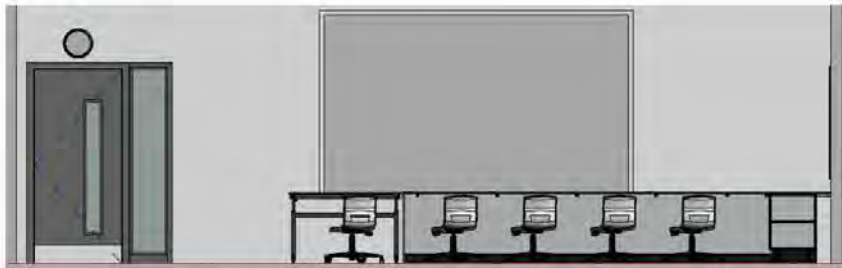
Digital Literacy

Do not Scale, use figured dimensions only

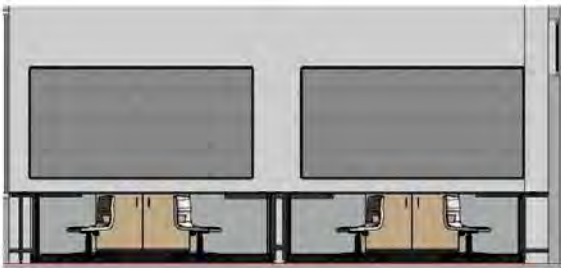
09/03/2021 09:01:35



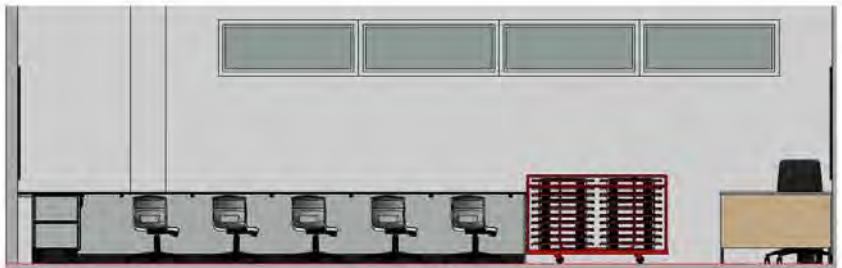
H-K03 Digital Lit Suite
1 : 50



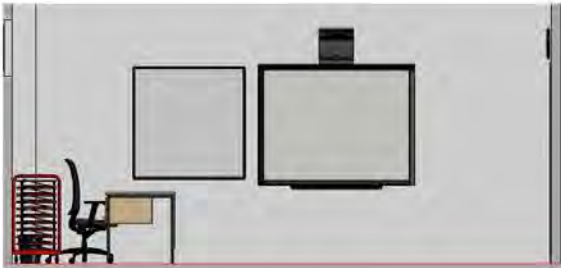
H-K03 Elevation A
1 : 50



H-K03 Elevation B
1 : 50



H-K03 Elevation C
1 : 50



H-K03 Elevation D
1 : 50



H-K03

ID	Product Code	Type	PDS	Description	UOM	Total Im	Qty
MW002	LC2	Fixed	LEG002	Metalwork - Cantilevered Metal Leg for 650mm Deep Worktop	ea	0.0	4
MW002	LC2	Fixed	LEG002	Metalwork - Cantilevered Metal Leg for 800mm Deep Worktop	ea	0.0	9
MW011	LSL 3 ---	Fixed	TBC	Metalwork - Connecting Rails for Perimeter/Island Support Legs	lm	8.2	10
MW004	LS1	Fixed	LEG004	Metalwork - Peninsula Support Leg @ 1200(d)	ea	0.0	6
SR078	CO-80D PLASTIC	Fixed	PB007	Miscellaneous - Surface Mounted Cable Management Port	ea	0.0	21
MI100	CLO1	Fixed	CBW001	Miscellaneous - Wall Mounted Clock (Battery Operated)	ea	0.0	1
-	CP 900 1000	Fixed	PAN001	Panel - MFC End Panel	lm	2.4	3
-	CP 700 1000	Fixed	PAN001	Panel - MFC Removable Panel	lm	21.5	8
STD23.2	BU 1000 D -	Fixed	STU002	Storage - Double Cupboard @ 1000(w) x 500(d) x 600(h)	ea	0.0	2
TA007	NB F A 1200 2400	Fixed	NB0001	Teacher Aids - (AF) Felt Pinboard @ 2400(w) x 1200(h)	ea	0.0	2
TA037	WB G A 1200 1200	Fixed	WBO002	Teacher Aids - (AF) High Gloss Whiteboard @ 1200(w) x 1200(h) w/ Pen Shell	ea	0.0	1
WT018	LH 750 - 1000	Fixed	WTOP07	Worktop - 16mm SGL 650mm Deep Worktop	lm	5.3	4
WT0016	LH 1200 1000	Fixed	WTDP07	Worktop - 16mm SGL 900mm Deep Sawtooth Worktop	lm	14.4	17
WT016	LH 1200 - 1000	Fixed	WTOP07	Worktop - 16mm SGL (Island/Peninsula) 1200mm Deep Worktop	lm	1.3	1
WT0016	LH 1200-1000	Fixed	WTOP16	Worktop - 16mm Trespa 900mm Deep Sawtooth Worktop	lm	2.0	2
EQ010+	ART010+	Loose	AEQ010+	Equipment - A2 Art Drawing Board	ea	0.0	20
MI125	WBIN001	Loose	PWB001	Miscellaneous - 14ltr Waste Bin	ea	0.0	1
EQ011+	ART011+	Loose	AEQ011	Miscellaneous - A2 Drawing Board Trolley	ea	0.0	1
SEA08	CHA001	Loose	SEA001	Seating - Executive High Mesh Back VDU Chair w/ Arms	ea	0.0	1
SEA07	CHA042	Loose	SEA032	Seating - Postura Task Chair w/ Castors	ea	0.0	20
TB015	HAF M 1200	Loose	HADJ02	Tables - Height Adjustable Table Frame @ 1200(w) x 600(d) w/ Trespa Top	ea	0.0	1
LS100.6	DES007	Loose	LS1002	Tables - Teachers Classroom Table w/ PU Edge & 2 Drawer Suspended Pedestal @ 1200(w) x 750(d) x 760(h)	ea	0.0	1

Project: Maybole Campus	Project No: 32044	Status: Tender
Location: Upper Ground Floor	Drawn By: BB	Date: 20/11/20
Room Name: HK03 Digital Lit Suite	Designed By: DeaneStor Scotland Ltd	
Room No: U024	Scale: 1 : 50 @ A2	
Drawing No: MAY-DEA-ZZ-01-DR-X-70-024	RDS:	Rev: B
© Copyright DeaneStor Scotland Ltd		

B. Reviewer's Name (For Approval) (If not applicable, leave blank)
C. Project Lead Name

By: MC
Ch'd: MC
Date: 20/11/20

Review Outcomes:	
A.	Approved, no comments.
B.	Approved subject to comments. (To be included in next revision)
C.	Not approved. (Issue if disagreement with manufacturer, etc. to include)
Signed:	
Date:	

© Copyright of DeaneStor Scotland Ltd.
DeaneStor Scotland Ltd shall have no responsibility for any use of this document other than which it was prepared.
Any drawing errors or divergencies should be brought to the attention of DeaneStor Scotland Ltd.
Drawings to be read & fully understood before work commences.
IF IN DOUBT ASK. DO NOT SCALE. Use figured dimensions only.
To be checked on site by contractor prior to construction.