

MAYBOLE COMMUNITY CAMPUS
PRESENTATION 16.03.2021



Contents

1. General Arrangements

- Lower Ground Floor
- Upper Ground Floor
- First Floor
- Second Floor

2. HE

- Cluster Layout
- Food Technology
- Food Technology 1
- Food Technology Alternative
- Home Economics Fabric
- HE Laundry, Stores & Food Prep

1. General Arrangements



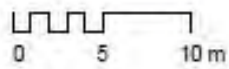
Lower Ground Floor



Key

Business & Computing	Facilities Management	General Toilet	School Management
Circulation	Facilities Management (b)	Home economics	Science
Circulation (D)	Flexible Learning	Learning place	Shared
Circulation (nd)	Flexible Learning (D)	Medical	Social
Cloaks	Flexible Learning (k)	Multi-purpose	Sports
Cloaks (D)	General Purpose	Plant	Staff / Admin
Community	General Teaching	Pupil Support	Storage
Craft and Design	General Teaching (D)	School management	Store (D)
Dry Room	General Teaching (ND)	School Management	Swimming pool
Expressive Arts			

1 (PP) - Proposed Lower Ground Floor Plan



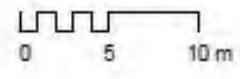
Upper Ground Floor



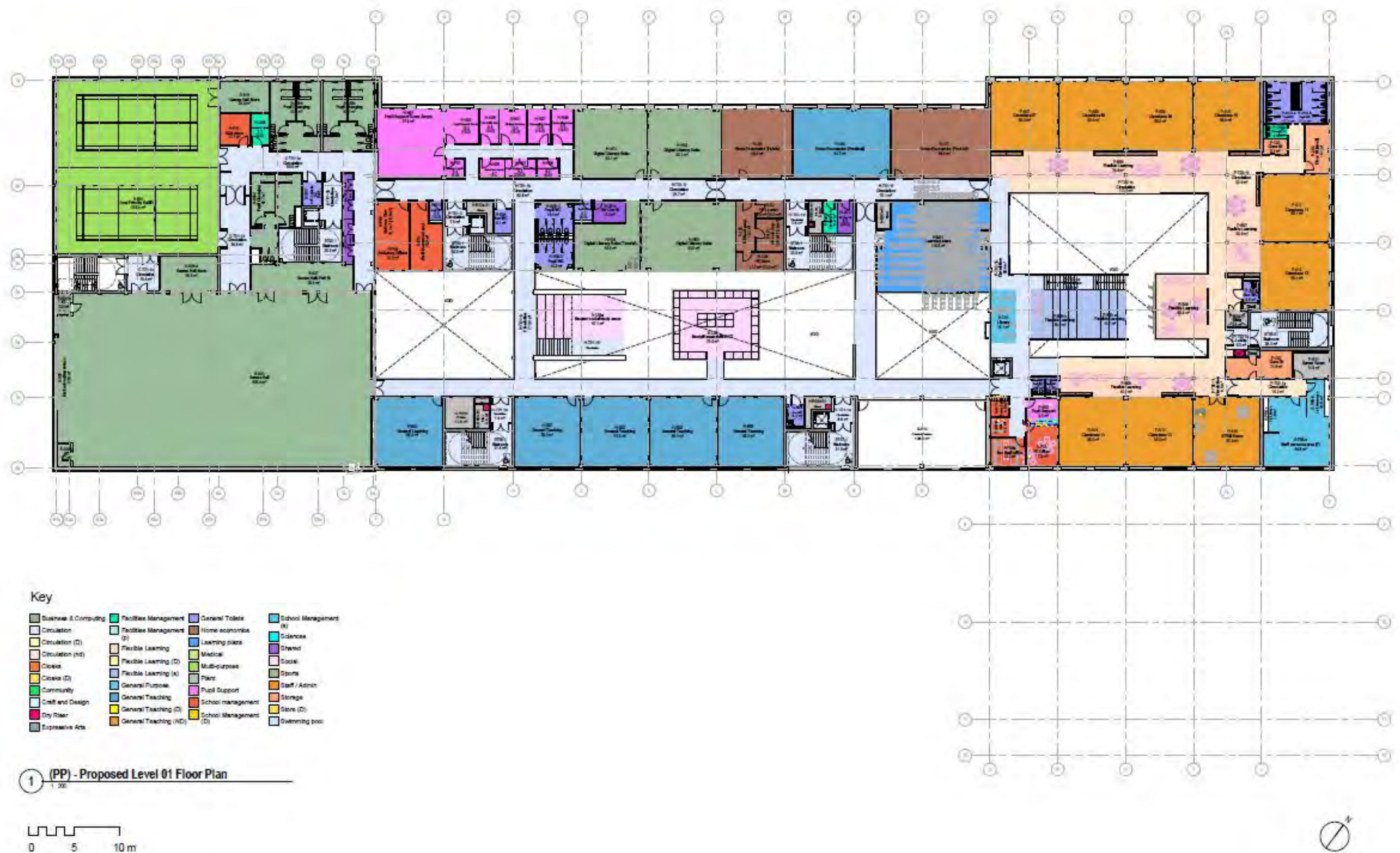
Key

Business & Computing	Facilities Management	General Toilets	School Management (B)
Circulation	Facilities Management (D)	Home economics	Schoolroom
Circulation (D)	Flexible Learning	Learning place	Shared
Circulation (nd)	Flexible Learning (D)	Medical	Social
Cloaks	Flexible Learning (D)	Multi-purpose	Sports
Cloaks (D)	Flexible Learning (A)	Plant	Staff / Admin
Community	General Purpose	Pupil Support	Storage
Craft and Design	General Teaching	School management	Store (D)
Dry Room	General Teaching (D)	School Management (D)	Swimming pool
Expressive Arts	General Teaching (ND)		

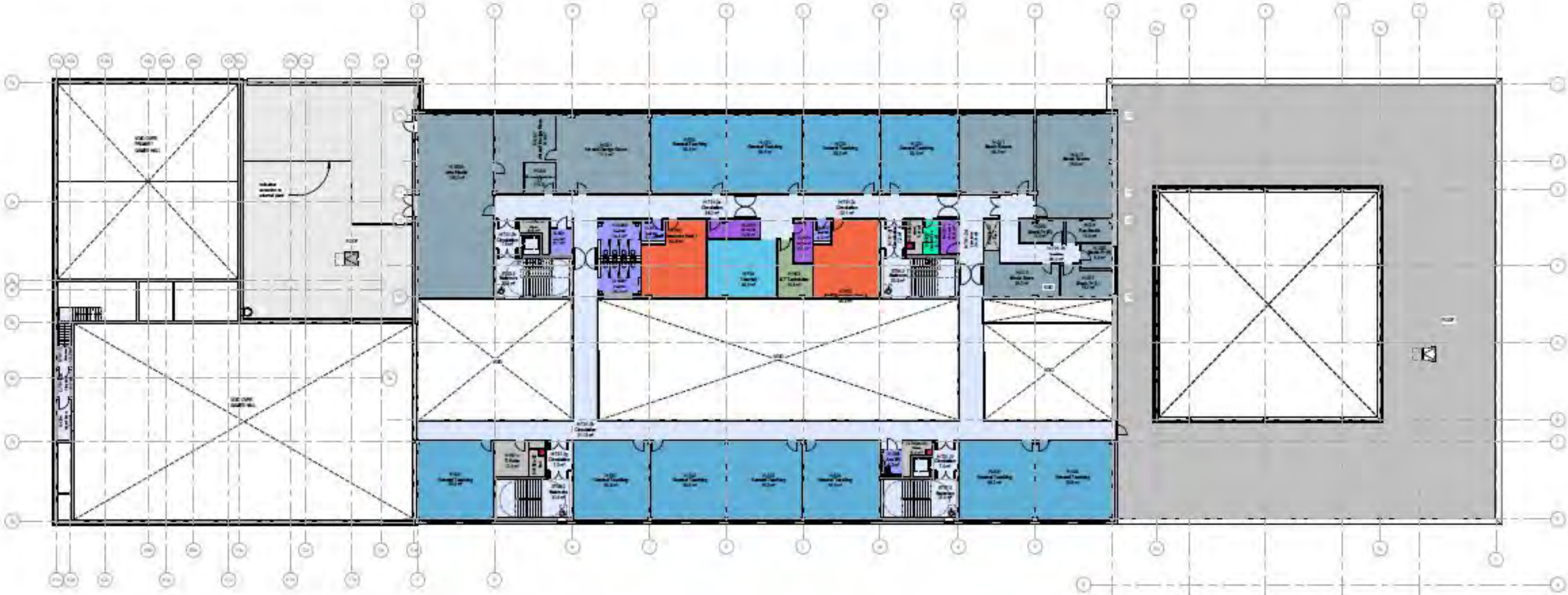
1 (PP) - Proposed Upper Ground Floor Plan
1:200



First Floor



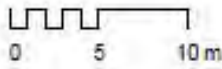
Second Floor



Key

Business & Computing	Facilities Management	General Toilet	School Management (H)
Circulation	Facilities Management (S)	Home economics	School Management (S)
Circulation (D)	Flexible Learning	Learning place	Shared
Circulation (nd)	Flexible Learning (D)	Medical	Social
Cloaks	Flexible Learning (S)	Multi-purpose	Sports
Cloaks (D)	General Purpose	Plant	Staff / Admin
Community	General Teaching	Pupil Support	Storage
Craft and Design	General Teaching (D)	School management	Store (D)
Dry Room	General Teaching (ND)	School Management (S)	Swimming pool
Expressive Arts			

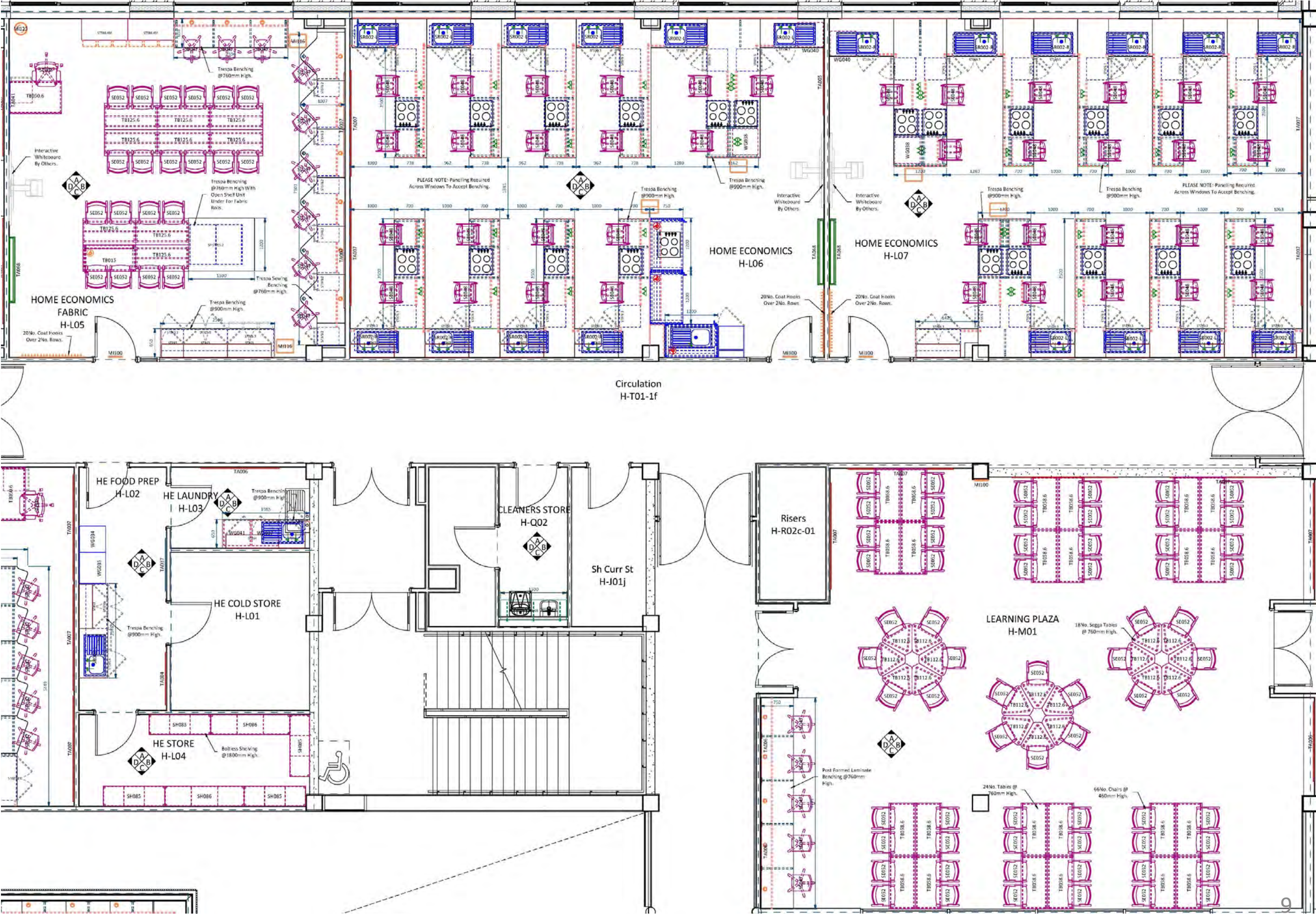
1 (PP) - Proposed Level 02 Floor Plan
1:200



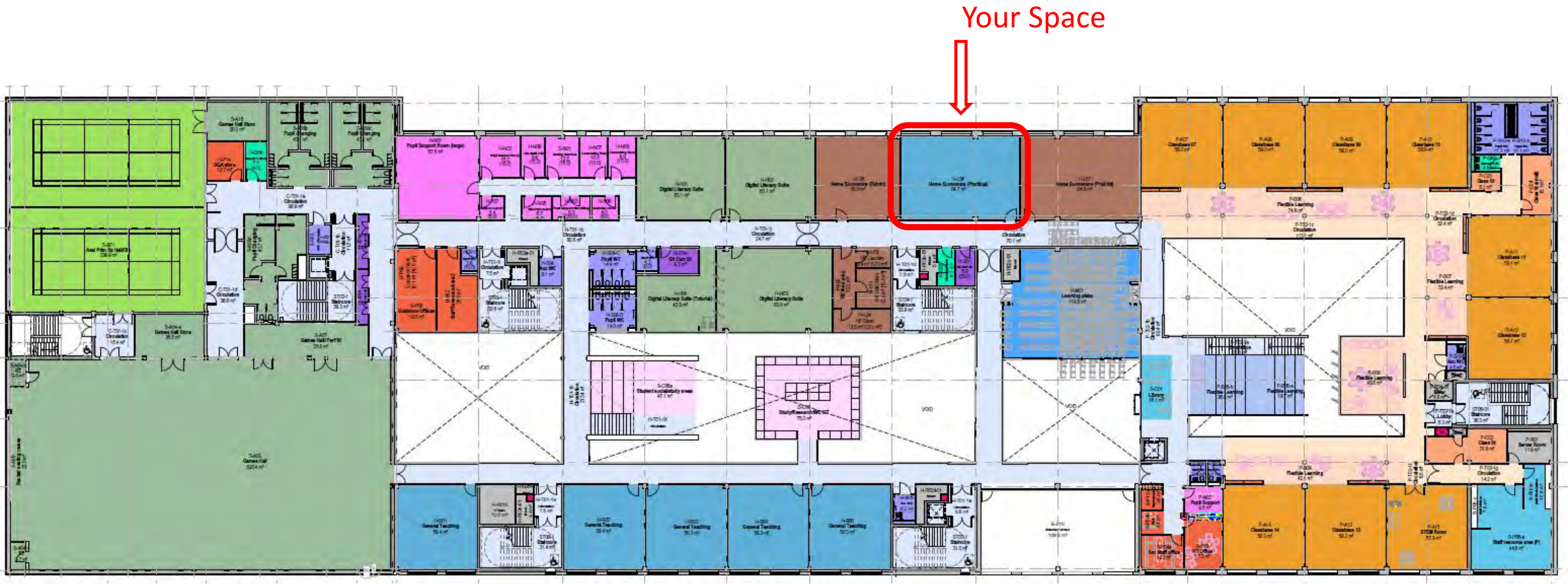
9. HE



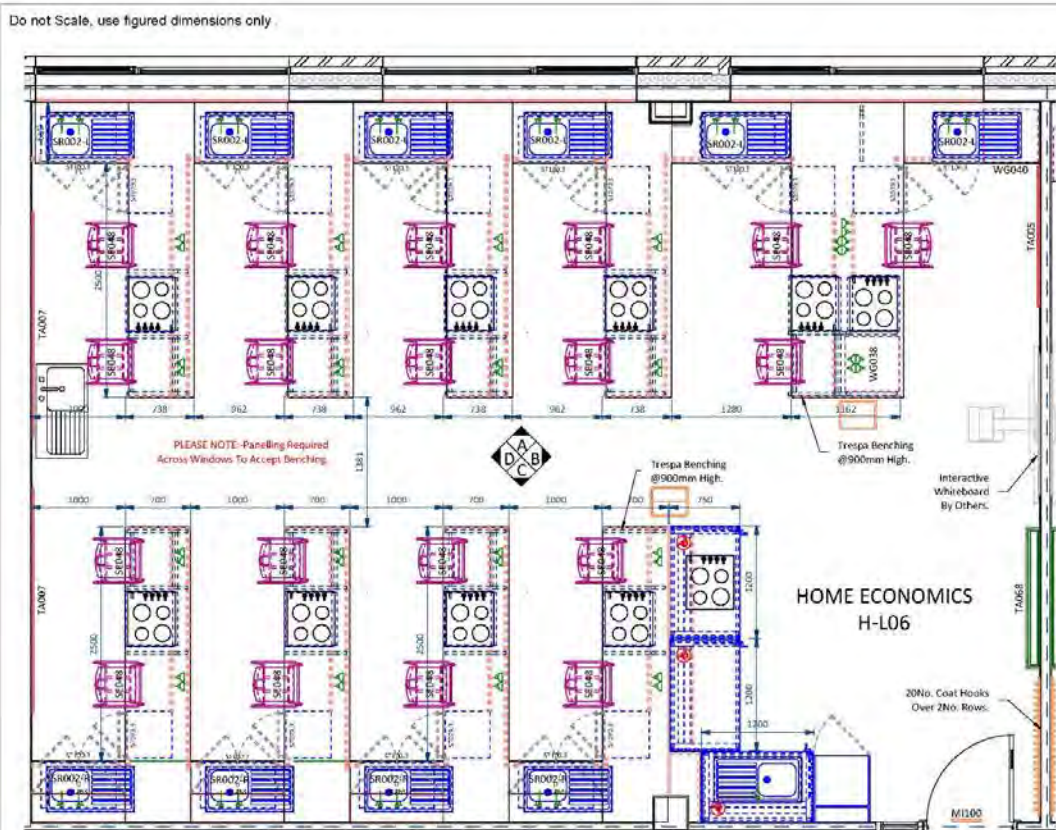
HE Cluster



Food Technology



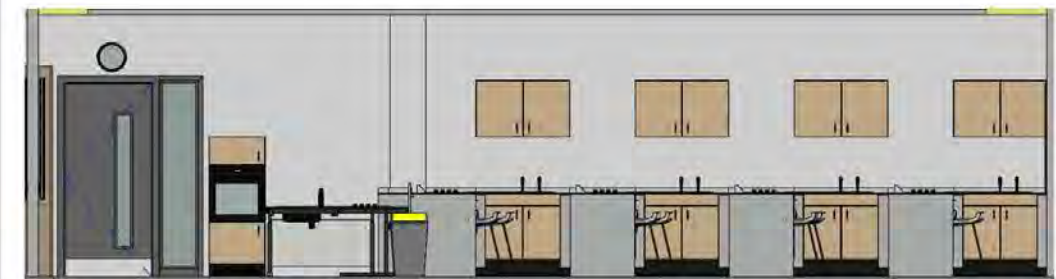
Food Technology



H-L06 Home Economics
1 : 50



H-L06 Elevation A
1 : 50



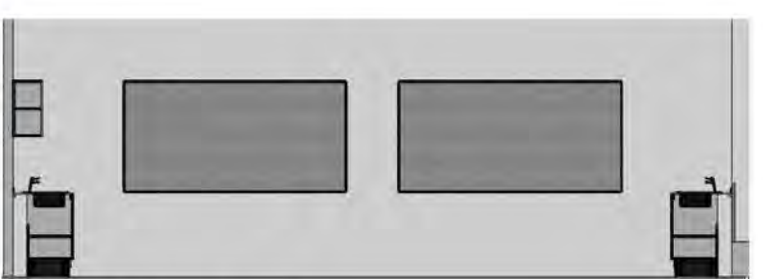
H-L06 Elevation C
1 : 50

Project:	Maybole Campus	Project No:	32044	Status:	Tender
Location:	First Floor	Drawn By:	BB	Date:	28/10/20
Room Name:	H06 Home Economics	Designed By:	Deanestor Scotland Ltd		
Room No:	F029	Scale:	1 : 50 @ A2		
Drawing No:	MAY-DEA-ZZ-02-DR-X-70-029	RDS:		Rev:	B

ID	Product Code	Type	PDS	Description	UOM	Total m	Qty
WT018	LH 750 - 1000	Fixed	WTOP07	16mm SGL 650mm Deep Worktop w/ Upstand	lm	1.3	1
WT018	LH 750 - 1000	Fixed	WTOP07	16mm SGL 750mm Deep Worktop w/ Upstand	lm	0.3	1
WT018	LH 750 - 1000	Fixed	WTOP07	16mm SGL (Island/Peninsula) 700mm Deep Worktop w/ Upstand	lm	22.1	7
WT016	LH 1200 - 1000	Fixed	WTOP07	16mm SGL (Island/Peninsula) 1200mm Deep Worktop w/ Upstand	lm	3.2	1
-	REFR001	Fixed	APPLIC015	Appliance - 4 Zone Induction Electric Hob	ea	0.0	1
WG026	OVEN001	Fixed	APPLIC039	Appliance - Integrated Electric Oven @ 595(w) x 550(d) x 595(h) approx.	ea	0.0	10
To Be Amended	To Be Amended	Fixed	To Be Amended	Appliance - Side Opening Integrated Electric Oven @ 595(w) x 550(d) x 595(h) Approx.	ea	0.0	1
MW011	LSL 3	Fixed	TBC	Metalwork - Connecting Rails for Perimeter/Island Support Legs	lm	4.6	8
TBC	TBC	Fixed	TBC	Metalwork - Double Cantilever Leg @ 1200mm Deep	ea	0.0	2
MW009	LSL 1	Fixed	-	Metalwork - Single Leg Frame for 650mm Deep Worktop	ea	0.0	1
MW009	LSL 1	Fixed	-	Metalwork - Single Leg Frame for 700mm Deep Worktop	ea	0.0	24
-	CB 16 1500	Fixed	CHB006	Miscellaneous - MFC Coathook Pattress @ 1400(w) x 120(h)	ea	0.0	2
-	PCH 1	Fixed	CH001	Miscellaneous - Plastic Moulded Coat & Hat Hook	ea	0.0	20
M1100	CLO1	Fixed	CBW001	Miscellaneous - Wall Mounted Clock (Battery Operated)	ea	0.0	1
SR049	STP L S	Fixed	H027	Pair Domestic Style Pillar Taps w/ Lever Handles (Hot & Cold)	ea	0.0	10
-	CP 900 1000	Fixed	PAN001	Panel - MFC End Panel	lm	7.8	11
-	CP 900 1000	Fixed	PAN001	Panel - MFC Removable Panel	lm	34.8	55
-	-	Fixed	PAN001	Panel - MFC Scribe Panel	lm	10.9	4
SR075	PED 4	Fixed	PB004	Services - Electrical Pedestal 2-Way Double Sided (Surface Mounted)	ea	0.0	2
SR074	PED 3	Fixed	PB003	Services - Electrical Pedestal 2-Way Single Sided (Surface Mounted)	ea	0.0	17
SR092	TAPO01	Fixed	APPLIC030	Services - Long Neck Lever Mixer Tap	ea	0.0	1
SR002 L	SIS 940 SB SD 2 304	Fixed	H002	Sinks - Stainless Steel Inset Sink LH Bowl / RH Drainer @ 940(w) x 490(d) w/ Double Tap Hole	ea	0.0	6
SR002 R	SIS 940 SB SD 2 304	Fixed	H002	Sinks - Stainless Steel Inset Sink RH Bowl / LH Drainer @ 940(w) x 490(d) w/ Double Tap Hole	ea	0.0	4
SR001	SIS 940 SB SD 1 304	Fixed	H001	Sinks - Stainless Steel Reversible Inset Single Bowl / Drainer @ 940(w) x 490(d) w/ Single Tap Hole	ea	0.0	1
ST100.3	BU 800 DSP	Fixed	STU009	Storage - Double Sink Unit @ 800(w) x 500(d) x 700(h)	ea	0.0	9
ST358	TCH 600 S-OVEN	Fixed	STU025	Storage - Eyelevel Oven Housing Unit w/ Cupboard Above and Below Side Opening Oven	ea	0.0	1
ST079.3	BU 500 S1	Fixed	STU007	Storage - Single Drawer Cupboard @ 500(w) x 500(d) x 700(h)	ea	0.0	10
ST104.3	BU 500 SSP	Fixed	STU010	Storage - Single Sink Unit @ 500(w) x 500(d) x 700(h)	ea	0.0	1
ST345	BU 600 - OVEN	Fixed	STU023	Storage - Underbench Oven Housing Unit @ 600(w) x 500(d) x 750(h)	ea	0.0	10
ST263	WUS 1000 D	Fixed	STU017	Storage - Wall Fixed Cupboard Unit @ 1000(w) x 300(d) x 600(h)	ea	0.0	4
TBC	TBC	Fixed	TBC	Tables - Height Adjustable Table w/ Trespa Top @ 1200(w) x 750(d)	ea	0.0	3
TA005	NB F A 1200 1500	Fixed	NB0001	Teacher Aids - (AF) Felt Pinboard @ 1500(w) x 1200(h)	ea	0.0	1
TA007	NB F A 1200 2400	Fixed	NB0001	Teacher Aids - (AF) Felt Pinboard @ 2400(w) x 1200(h)	ea	0.0	2
TA068	RB 2250 1500 4	Fixed	WB0004	Teacher Aids - Rollerboard w/ 4 Plain White Panels @ 1500(w) x 2250(h)	ea	0.0	1
WG029	LDU H08S002	Fixed	APPLIC042	White Goods - 4 Zone Induction Electric Hob	ea	0.0	10
WT018	LH 750 - 1000	Fixed	WTOP07	Worktop - 16mm SGL 650mm Deep Worktop w/ Upstand	lm	9.4	9
WT018	LH 750 - 1000	Fixed	WTOP07	Worktop - 16mm SGL 700mm Deep Worktop w/ Upstand	lm	3.2	1
M1116	BIN003	Loose	KBN003	Miscellaneous - Roll Top Bin 50ltr Capacity	ea	0.0	2
SE048	CHA043	Loose	SEA033	Seating - Postura Stool @ 610(h) w/ Low Back	ea	0.0	19
WG040	EDU DISH002	Loose	APPLIC052	WG - Freestanding Dishwasher	ea	0.0	1
WG038	EDU REFR001	Loose	APPLIC050	White Goods - Fridge Undercounter Larder @ 595(w) x 595(d) x 850(h) approx.	ea	0.0	1



H-L06 Elevation B
1 : 50



H-L06 Elevation D
1 : 50



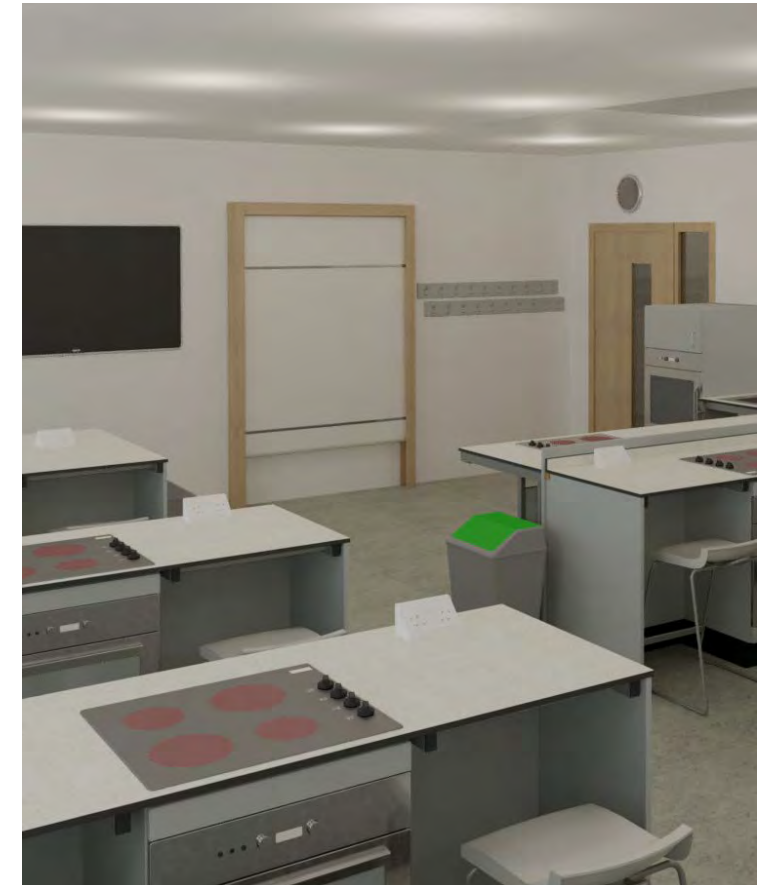
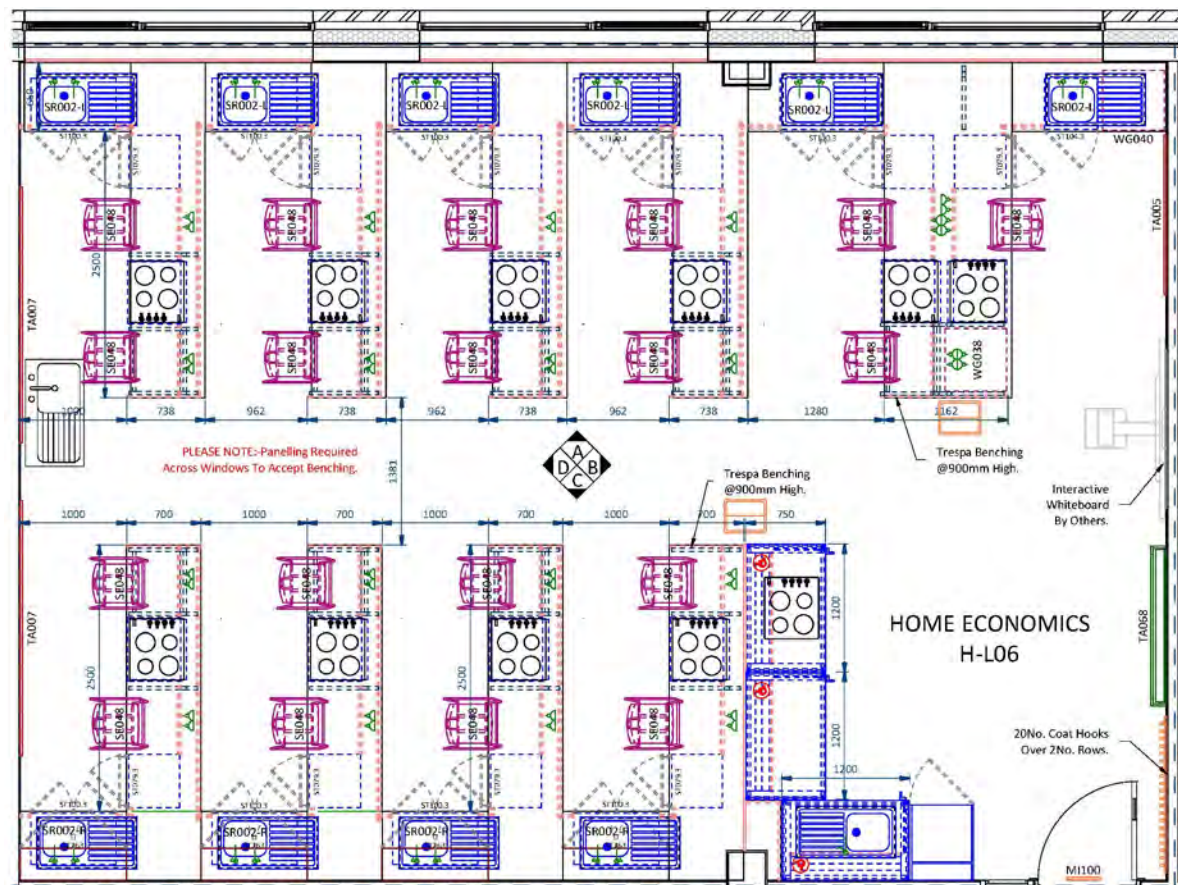
H-L06

Review Outcomes:	
A.	Approved, no comments.
B.	Approved subject to comments. (to be submitted)
C.	Not approved. (to be resubmitted)
Signed:	
Date:	

© Copyright of Deanestor Scotland Ltd. Deanestor Scotland Ltd shall have no responsibility for any use of this document other than which it was prepared. Any drawing errors or divergencies should be brought to the attention of Deanestor Scotland Ltd. Drawings to be read & fully understood before work commences. IF IN DOUBT ASK. DO NOT SCALE. Use figured dimensions only. To be checked on site by contractor prior to construction.

Food Technology

- The Food Technology department comprises two generous and well equipped laboratories coupled with separate central storage servicing the teaching spaces. Traditional layout featuring peninsula arrangement.
- Trespa worksurfaces specified throughout for cleaning and hygiene purposes.
- Cooking facilities incorporate an oven housing with a separate hob, configured as part of the fitted furniture for practicality and ease of cleaning.
- Traditional layout featuring peninsula arrangement.
- Height Adjustable DDA compliant table included within design.
- Extended Warranties: 20 years Stools.

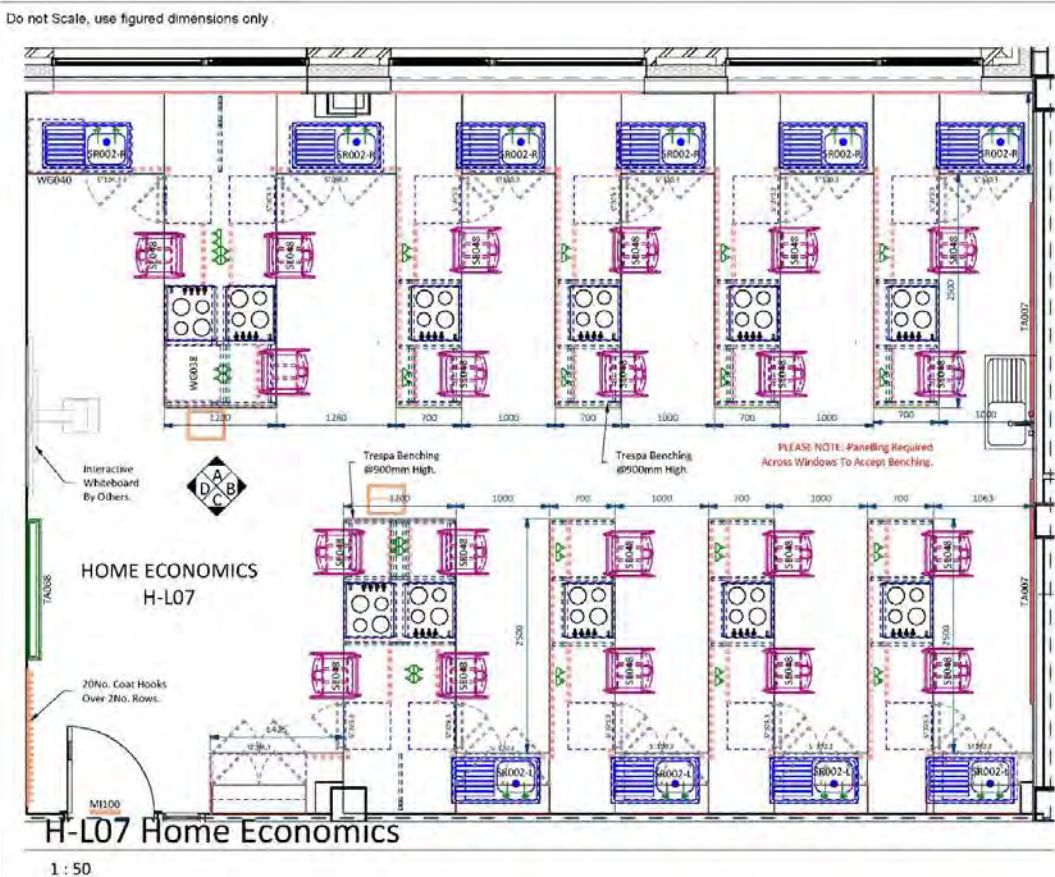


Seating for: 20 Pupils

Food Technology 1



Food Technology 1

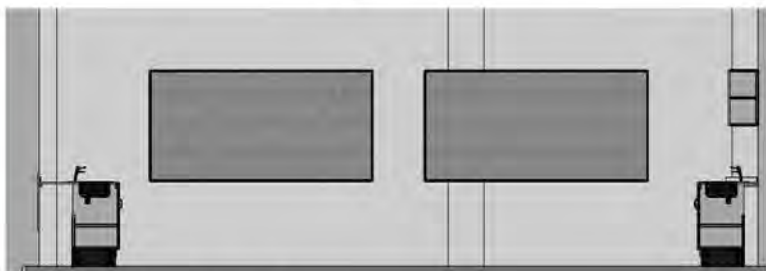


ID	Product Code	Type	PDS	Description	UOM	Total Im	Qty
WT018	LH 750 - 1000	Fixed	WTOP07	16mm SGL 650mm Deep Worktop w/ Upstand	lm	2.5	2
WT016	LH 1200 - 1000	Fixed	WTOP07	16mm SGL 850mm Deep Worktop w/ Upstand	lm	1.3	1
WT018	LH 750 - 1000	Fixed	WTOP07	16mm SGL (Island/Peninsula) 700mm Deep Worktop w/ Upstand	lm	22.9	7
WT016	LH 1200 - 1000	Fixed	WTOP07	16mm SGL (Island/Peninsula) 1200mm Deep Worktop w/ Upstand	lm	6.5	2
WG026	OVEN003	Fixed	APPLIC039	Appliance - Integrated Electric Oven @ 595(w) x 550(d) x 595(h) approx.	ea	0.0	11
MW011	LSL 3 -	Fixed	TBC	Metalwork - Connecting Rails for Perimeter/Island Support Legs	lm	4.0	7
TBC	TBC	Fixed	TBC	Metalwork - Double Cantilever Leg @ 1200mm Deep	ea	0.0	5
MW009	LSL 1 -	Fixed	-	Metalwork - Single Leg Frame for 650mm Deep Worktop	ea	0.0	1
MW009	LSL 1 -	Fixed	-	Metalwork - Single Leg Frame for 700mm Deep Worktop	ea	0.0	21
-	LSL 1 -	Fixed	TBC	Metalwork - Single Leg Frame for 850mm Deep Worktop	ea	0.0	1
-	CB TG 1500	Fixed	CHB006	Miscellaneous - MFC Coathook Pattrress @ 1400(w) x 120(h)	ea	0.0	2
-	PCH 1	Fixed	CH001	Miscellaneous - Plastic Moulded Coat & Hat Hook	ea	0.0	20
MI100	CLO1	Fixed	CBW001	Miscellaneous - Wall Mounted Clock (Battery Operated)	ea	0.0	1
SR049	STP L S	Fixed	H027	Pair Domestic Style Pillar Taps w/ Lever Handles (Hot & Cold)	ea	0.0	10
-	CP 900 1000	Fixed	PAN001	Panel - MFC End Panel	lm	8.5	11
-	CP 900 1000	Fixed	PAN001	Panel - MFC Removable Panel	lm	36.3	61
-	ERROR	Fixed	PAN001	Panel - MFC Scribe Panel	lm	8.0	3
SR075	PED 4	Fixed	PB004	Services - Electrical Pedestal 2-Way Double Sided (Surface Mounted)	ea	0.0	4
SR074	PED 3	Fixed	PB003	Services - Electrical Pedestal 2-Way Single Sided (Surface Mounted)	ea	0.0	15
SR002 L	SIS 940 SB SD 2 304	Fixed	H002	Sinks - Stainless Steel Inset Sink LH Bowl / RH Drainer @ 940(w) x 490(d) w/ Double Tap Hole	ea	0.0	4
SR002 R	SIS 940 SB SD 2 304	Fixed	H002	Sinks - Stainless Steel Inset Sink RH Bowl / LH Drainer @ 940(w) x 490(d) w/ Double Tap Hole	ea	0.0	6
ST100.3	BU 800 DSP-	Fixed	STU009	Storage - Double Sink Unit @ 800(w) x 500(d) x 700(h)	ea	0.0	8
ST098.3	BU 1000 DSP-	Fixed	STU009	Storage - Double Sink Unit @ 1000(w) x 500(d) x 700(h)	ea	0.0	2
ST079.3	BU 500 SL-	Fixed	STU007	Storage - Single Drawer Cupboard @ 500(w) x 500(d) x 700(h)	ea	0.0	12
ST104.3	BU 500 SSP-	Fixed	STU010	Storage - Single Sink Unit @ 500(w) x 500(d) x 700(h)	ea	0.0	1
ST345	BU 600 - OVEN	Fixed	STU023	Storage - Underbench Oven Housing Unit @ 600(w) x 500(d) x 750(h)	ea	0.0	11
ST263	WUS 1000 D-	Fixed	STU017	Storage - Wall Fixed Cupboard Unit @ 1000(w) x 300(d) x 600(h)	ea	0.0	5
TA007	NB F A 1200 2400	Fixed	NB0001	Teacher Aids - (AF) Felt Pinboard @ 2400(w) x 1200(h)	ea	0.0	2
TA068	RB 2250 1500 4	Fixed	WB0004	Teacher Aids - Rollerboard w/ 4 Plain White Panels @ 1500(w) x 2250(h)	ea	0.0	1
WG029	EDU H085002	Fixed	APPLIC042	White Goods - 4 Zone Induction Electric Hob	ea	0.0	11
WT018	LH 750 - 1000	Fixed	WTOP07	Worktop - 16mm SGL 650mm Deep Worktop w/ Upstand	lm	3.0	3
WT016	LH 1200 - 1000	Fixed	WTOP07	Worktop - 16mm SGL 850mm Deep Worktop w/ Upstand	lm	4.0	4
-	LH 1200 1000	Fixed	WTOP07	Worktop - 16mm Trespa 850mm Deep Worktop w/ Upstand	lm	1.5	1
MI125	WB0001	Loose	PWB001	Miscellaneous - 14ltr Waste Bin	ea	0.0	1
MI116	BIN003	Loose	KBN003	Miscellaneous - Roll Top Bin 50ltr Capacity	ea	0.0	2
SE048	CHA043	Loose	SEA033	Seating - Postura Stool @ 610(h) w/ Low Back	ea	0.0	21
WG040	EDU DISH002	Loose	APPLIC052	WG - Freestanding Dishwasher	ea	0.0	1
WG038	EDU REF001	Loose	APPLIC050	White Goods - Fridge Undercounter Larder @ 595(w) x 595(d) x 850(h) approx.	ea	0.0	1



H-L07 Elevation A

1 : 50



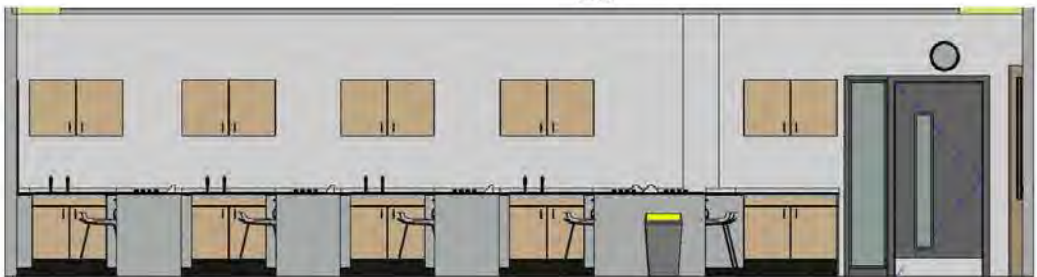
H-L07 Elevation B

1 : 50



H-L07 Elevation D

1 : 50



H-L07 Elevation C

1 : 50



H-L07

Project: Maybole Campus	Project No: 32044	Status: Tender
Location: First Floor	Drawn By: BB	Date: 28/10/20
Room Name: HL07 Home Economics	Designed By: Deanestor Scotland Ltd	
Room No: F030	Scale: 1 : 50 @ A2	
Drawing No: MAY-DEA-ZZ-02-DR-X-70-030	RDS:	Rev: B

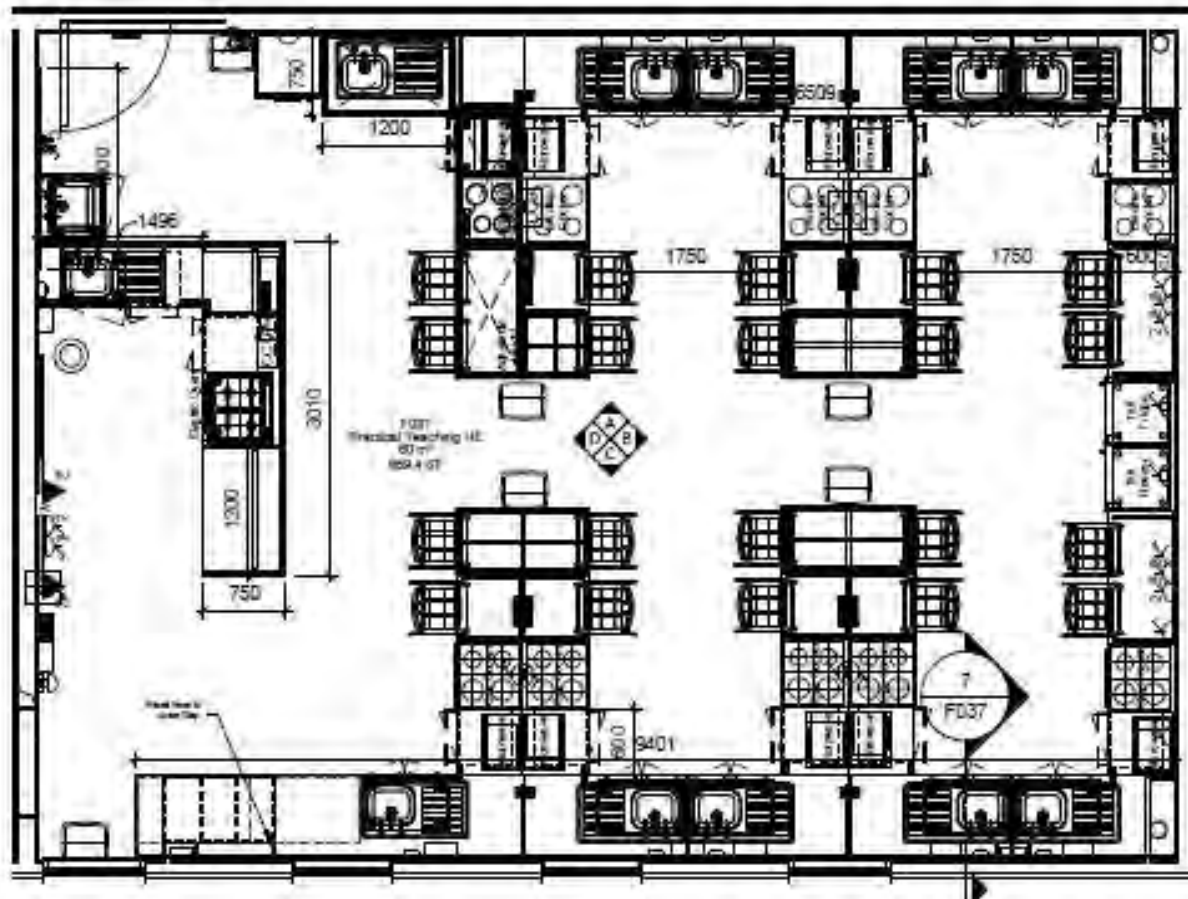
Rev	Description	By	Chk'd	Date
1	Rev. 1 - 1st Floor Perspective Drawing	BB	MC	28/10/20
2	Rev. 2 - 1st Floor Perspective Drawing	BB	MC	28/10/20

Review Outcomes:	
A.	Approved, no comments.
B.	Approved subject to comments.
C.	Not approved, require re-submission.
Signed:	
Date:	

© Copyright of Deanestor Scotland Ltd.
Deanestor Scotland Ltd shall have no responsibility for any use of this document other than which it was prepared.
Any drawing errors or divergencies should be brought to the attention of Deanestor Scotland Ltd.
Drawings to be read & fully understood before work commences.
IF IN DOUBT ASK. DO NOT SCALE. Use figured dimensions only.
To be checked on site by contractor prior to construction.

Food Technology Alternative Layout

- This alternative Food Technology layout offers better circulation than the traditional style peninsula layout.
- This layout could work in the space confines of Maybole.
- Trespa worksurfaces specified throughout for cleaning and hygiene purposes.
- Cooking facilities can be accommodated in oven housings and hobs within the worktops.
- Height Adjustable DDA compliant table included within design.
- Warranties: Fitted furniture 15 years, Loose furniture 20 years.



Seating for: 20 Pupils

Home Economics Fabric

Your Space



09/03/2021 08:56:05

[illegible]

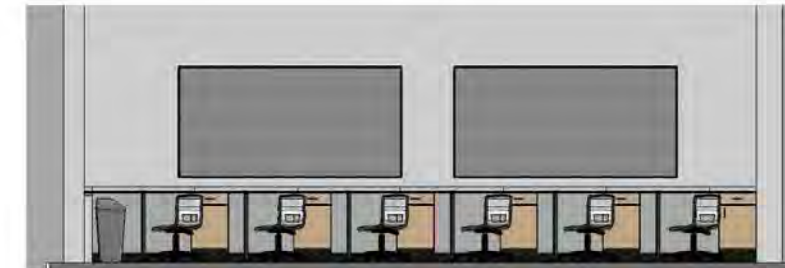
1:50



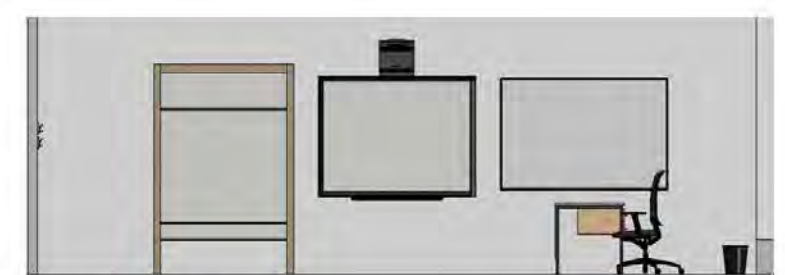
1:50



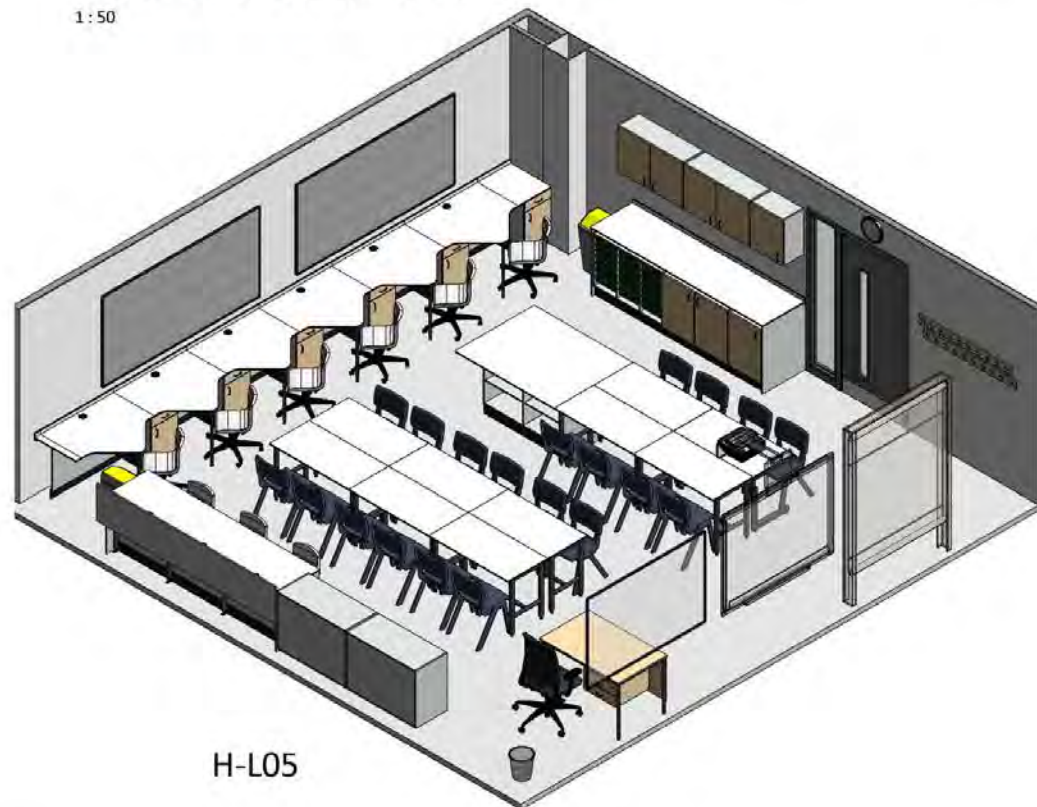
1:50



1:50



1:50



H-L05

Project:	Maybole Campus	Project No.	32044	Status:	Tender
		Drawn By:	BB	Date:	28/10/20
Location:	First Floor	Designed By:	Deanestor Scotland Ltd		
Room Name:	HL05 Home Econo. Fabric	Scale:	1 : 50 @ A2		
Room No.	F028	RIDS:			Rev. B
Drawing No.	MAY-DEA-77-02-DR-X-70-028 © Copyright Deanestor Scotland Ltd				

Rev	Description
-----	-------------

TO	MC	CD/PA/ID
RE	WL	WZ/IN/CO
By	Chk'd	Date

Review Outcome:

A. ☐ Approved, no comments.

B. ☐ Approved subject to comment(s).
(up to 250 characters)

C. ☐ Not approved. (Leave if discordant with
protocols/APP, no action)

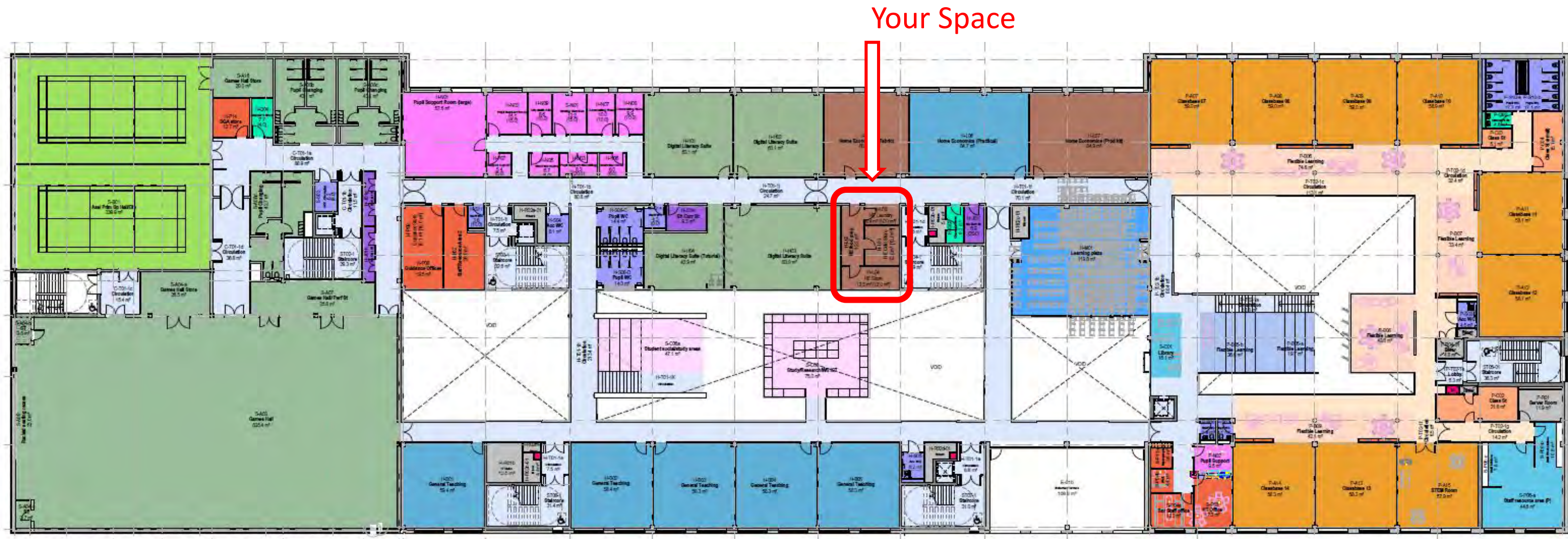
Signed _____

Date _____

© Copyright of Deaneastor Scotland Ltd
Deaneastor Scotland Ltd shall have no responsibility for any use
of this document other than which it was prepared.
Any drawing errors or divergencies should be brought to the
attention of Deaneastor Scotland Ltd.
Drawings to be read & fully understood before work
commences.
IF IN DOUBT ASK. DO NOT SCALE. Use figured dimensions only.
To be checked on site by contractor prior to construction.

ID	Product Code	Type	PoS	Description	UOM	Total Im	Qty
MW009	LSL 1 —	Fixed	~	Metalwork - Single Leg Frame for 650mm Deep Worktop	ea	0.0	4
MW004	LS1	Fixed	LEG004	Metalwork - Straight Leg w/ Adjustable Foot	ea	0.0	6
-	CH T6 1500	Fixed	CHB006	Miscellaneous - MFC Coathook Pattress @ 1400(w) x 120(h)	ea	0.0	2
-	PCH 1	Fixed	CH001	Miscellaneous - Plastic Moulded Coat & Hat Hook	ea	0.0	20
SR078	CO 800 PLASTIC	Fixed	PB007	Miscellaneous - Surface Mounted Cable Management Port	ea	0.0	9
MI100	CLD1	Fixed	CBW001	Miscellaneous - Wall Mounted Clock (Battery Operated)	ea	0.0	1
-	CP 900 1000	Fixed	PAN001	Panel - MFC End Panel	lm	3.6	5
-	CP 700 1000	Fixed	PAN001	Panel - MFC Removable Panel	lm	7.3	7
-	ERROR	Fixed	PAN001	Panel - MFC Scribe Panel	lm	2.7	1
ST023.3	BU 1000 D - -	Fixed	STU002	Storage - Double Cupboard @ 1000(w) x 500(d) x 700(h)	ea	0.0	1
SP-ST015.2	SP - BU 1200 - - -	Fixed	SP - STU001	Storage - Open Shelf Unit @ 1200(w) x 900(d) x 600(h)	ea	0.0	1
ST063.3	BU 500 S -	Fixed	STU006	Storage - Single Cupboard @ 500(w) x 500(d) x 700(h)	ea	0.0	1
ST078.2	BU 400 S1-	Fixed	STU007	Storage - Single Drawer Cupboard @ 400(w) x 500(d) x 600(h)	ea	0.0	6
ST388.3	BU T 1050 —	Fixed	TRU001	Storage - Triple Bay Tray Unit @ 1050(w) x 500(d) x 700(h) w/ 21 Shallow Trays	ea	0.0	1
ST293	WUS 500 S -	Fixed	STU018	Storage - Wall Fixed Cupboard Unit @ 500(w) x 300(d) x 600(h)	ea	0.0	1
ST263	WUS 1000 D -	Fixed	STU017	Storage - Wall Fixed Cupboard Unit @ 1000(w) x 300(d) x 600(h)	ea	0.0	2
TA007	NB F A 1200 2400	Fixed	NBQ001	Teacher Aids - (AF) Felt Pinboard @ 2400(w) x 1200(h)	ea	0.0	2
TA041	WB G A 1800 1200	Fixed	WBQ002	Teacher Aids - (AF) High Gloss Whiteboard @ 1800(w) x 1200(h) w/ Pen Shelf	ea	0.0	1
TA068	RB 2250 1500 4	Fixed	WBQ004	Teacher Aids - Rollerboard w/ 4 Plain White Panels @ 1500(w) x 2250(h)	ea	0.0	1
WT017	LH 630 1000	Fixed	WTO017	Worktop - 16mm SGL 630mm Deep Worktop w/ Upstand	lm	0.6	2
WT018	LH 750 - 1000	Fixed	WTO007	Worktop - 16mm SGL 650mm Deep Worktop w/ Upstand	lm	5.2	2
WT016	LH 1200 - 1000	Fixed	WTO007	Worktop - 16mm SGL (Island/Peninsula) 1200mm Deep Worktop	lm	1.5	1
-	LH 1200 1000	Fixed	WTO016	Worktop - 16mm SGL 1050mm Deep Sewing Worktop w/ Upstand	lm	6.6	6
ST481	T1	Loose	TRA001	F1 - Shallow Gratiel Tray @ 312(w) x 427(d) x 75(h)	ea	0.0	21
MI125	WBIN001	Loose	PWB001	Miscellaneous - 14ltr Waste Bin	ea	0.0	2
MI116	BIN003	Loose	KBN003	Miscellaneous - Roll Top Bin 50ltr Capacity	ea	0.0	2
MI128	CT1	Loose	CTRA001	Miscellaneous - Shallow Tray @ 312(w) x 427(d) x 75(h)	ea	0.0	43
SE008	CHA001	Loose	SEA001	Seating - Executive High Mesh Back VDU Chair w/ Arms	ea	0.0	1
SE047	CHA042	Loose	SEA032	Seating - Postura Task Chair w/ Castors	ea	0.0	9
SE052	CHA047	Loose	SEA035	Seating - Postura Chair @ 460(h) (Size 6)	ea	0.0	20
ST388.4M	BU T 1050 —	Loose	TRU001	Storage - Mobile Triple Bay Tray Unit @ 1050(w) x 500(d) x 750(h) w/ 24 Shallow Trays	ea	0.0	2
TB015	HAF M 1200	Loose	HADJ02	Tables - Height Adjustable Table Frame @ 1200(w) x 600(d) w/ Tresspa Top	ea	0.0	1
TB125.6	TAB074	Loose	LST033	Tables - Practical Table @ 1200(w) x 600(d) x 750(h) w/ Tresspa Top	ea	0.0	9
TB050.6	DES007	Loose	LST002	Tables - Teachers Classroom Table w/ PU Edge & 2 Drawer Suspended Pedestal @ 1200(w) x 750(d) x 760(h)	ea	0.0	1

HE Laundry, Stores & Food Prep



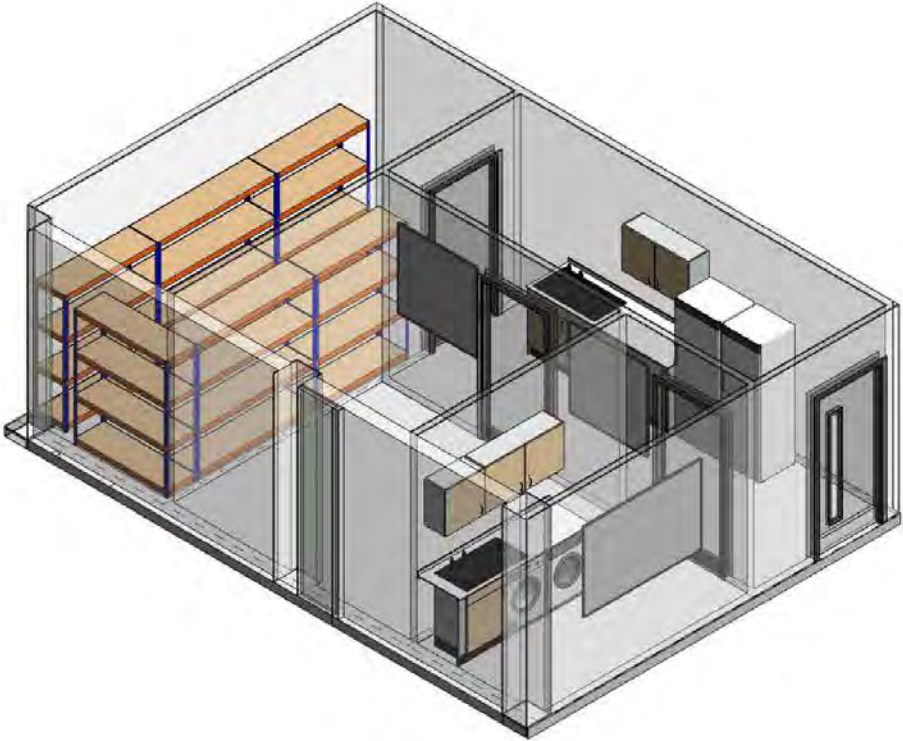
HE Laundry, Stores & Food Prep

Do not Scale, use figured dimensions only

10/03/2021 11:34:38



HE Food Prep Area
1 : 50



HE Food Prep Iso

Project: Maybole Campus	Project No: 32044	Status: Tender
Location: First Floor	Drawn By: BB	Date: 10/03/2021
Room Name: HE Food Prep Area	Designed By: Deanestor Scotland Ltd	
Room No: bbb	Scale: 1 : 50 @ A2	
Drawing No:	RDS:	Rev: A

© Copyright Deanestor Scotland Ltd.

Rev

Description

By

Chk'd

Date

Review Outcome:

- A. ☐ Approved, no comments.
- B. ☐ Approved subject to comments.
- C. ☐ Not approved, issues to be resolved with Deanestor Scotland Ltd.

Signed: _____

Date: _____

© Copyright of Deanestor Scotland Ltd. Deanestor Scotland Ltd shall have no responsibility for any use of this document other than which it was prepared. Any drawing errors or divergencies should be brought to the attention of Deanestor Scotland Ltd. Drawings to be read & fully understood before work commences. IF IN DOUBT ASK. DO NOT SCALE. Use figured dimensions only. To be checked on site by contractor prior to construction.